



MG WINDOWS

MG Windows is a leader in the market of premium glazing and a reliable business partner of the best architectural and construction companies. We are among the best experts in timber windows and are prepared to implement even the most ambitious solutions to the highest standard.





THE PHILOSOPHY OF EXCELLENCE

NOT JUST TIMBER WINDOWS

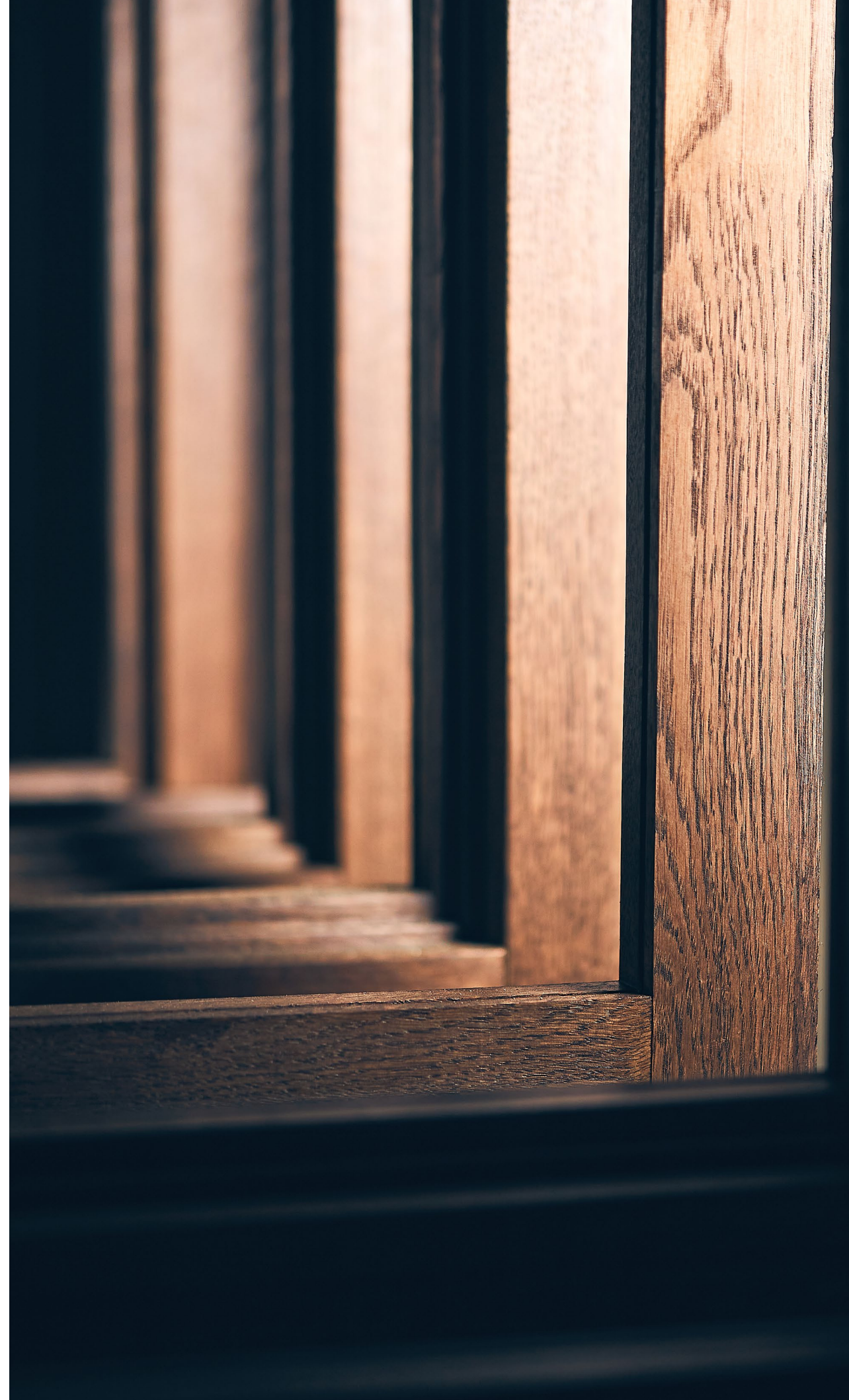
Every project we are involved in is unique for us: we develop individual technical solutions selecting the most suitable profile, wood type and color. The result of our approach is impeccable service, operating comfort and exclusive design that is harmoniously integrated in accordance with the architect's solutions.

Quality is always our priority. We do cooperate with the best component manufacturers, continuously upgrade the skills of our personnel, use only carefully selected wood of the highest quality, and each our product undergoes a multi-stage test.

We value and protect the environment. We use only natural materials in the production of windows, so they are completely safe for the health of our customers, while the production itself is entirely environmentally friendly, and the wood used is harvested within the program of A1:D24 restoration of deforested areas.

Our windows retain high energy efficiency in any climatic conditions and in any season. They tactfully keep indoor space warm in winter and cool in summer.

Wooden windows are designed not only for reliable protection against the natural perils, but they also serve as a symbol of status and a piece of modern luxury. Without drawing extra attention, they subtly complement the aesthetics of exteriors and interiors, granting a finished and noble appearance.









OPERATING
COMFORT
AND TIMELESS
DESIGN



TRADITION + TECHNOLOGY

Perfection is achieved through knowledge, experience and a strict control at all production stages. That is the reason why we manufacture our windows in a modern factory, using our own inventive ways, as well as experience and knowledge gained in close cooperation with leading European manufacturers.

Our production comes as a synergy of long-term carpentry traditions, high precision equipment and advanced technologies. We regularly improve our window production process by developing and introducing innovative technologies, which are bench-tested in leading research institutes prior to installation.

We guarantee absolute reliability and quality of our products. Our own engineering department works in close cooperation with highly professional production managers, allowing us to significantly reduce production time and quickly respond to any unforeseen challenges that might appear in the construction process.







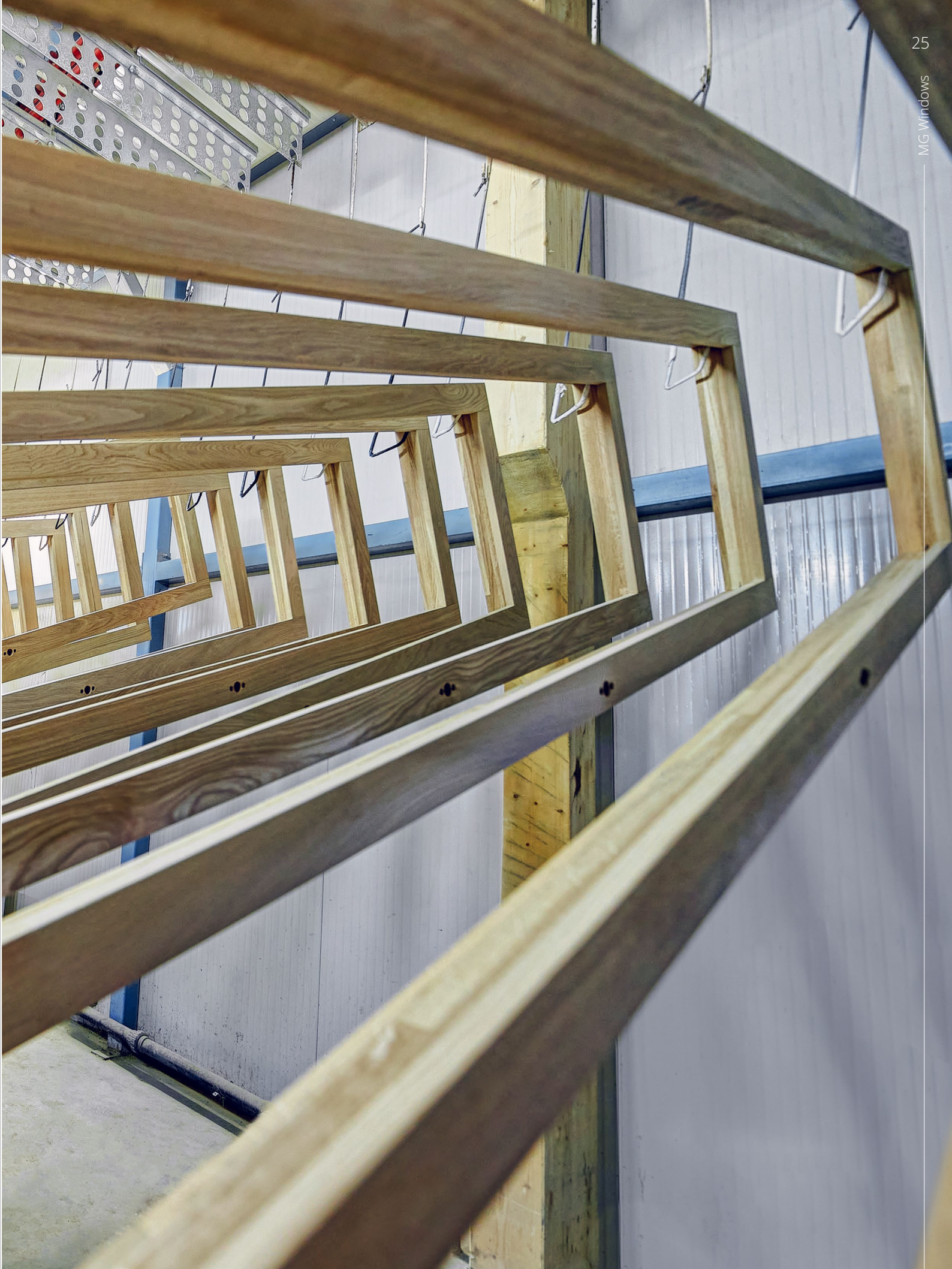


QUALITY
CONTROL
AT ALL
STAGES



MODERN
PRODUCTION
TECHNOLOGIES
AND EQUIPMENT

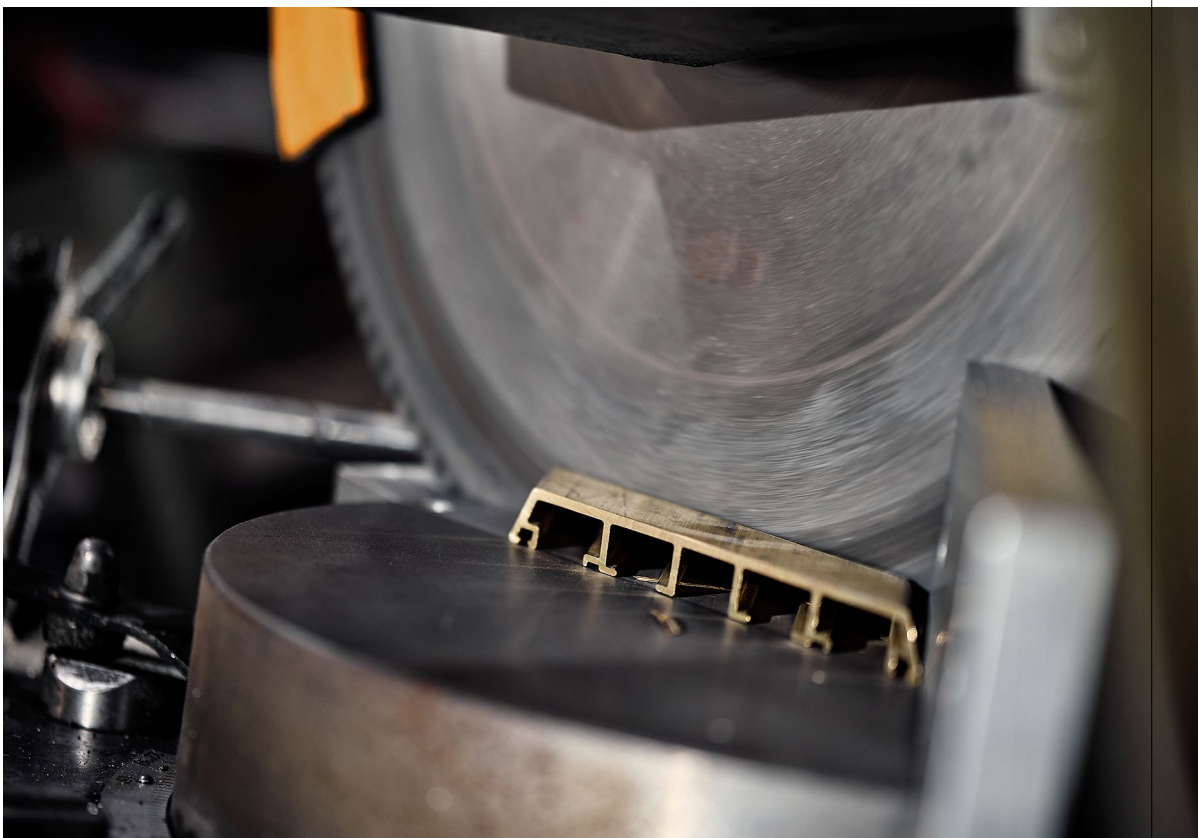






HIGHLY QUALIFIED
AND EXPERIENCED
PERSONNEL









OUR PROJECTS

RESIDENTIAL COMPLEX "GARDEN QUARTERS"	34
RESIDENTIAL COMPLEX "THE RESIDENCES MANDARIN ORIENTAL"	40
RESIDENTIAL COMPLEX "KUTUZOVSKIY XII"	46
RESIDENTIAL COMPLEX "CLOUD NINE"	50
RESIDENTIAL COMPLEX "BRODSKY"	54
RESIDENTIAL COMPLEX "PIROGOVSKAYA 14"	58
RESIDENTIAL COMPLEX "MALAYA BRONNAYA 15"	60
PRIVATE HOUSE OUTSIDE MOSCOW	62
RESIDENTIAL COMPLEX "STOLESHNIKOV 7"	64
RESIDENTIAL COMPLEX "ZOLOTY"	66
RESIDENTIAL COMPLEX "BRYUSOV PEREULOK 2A"	68

RESIDENTIAL COMPLEX

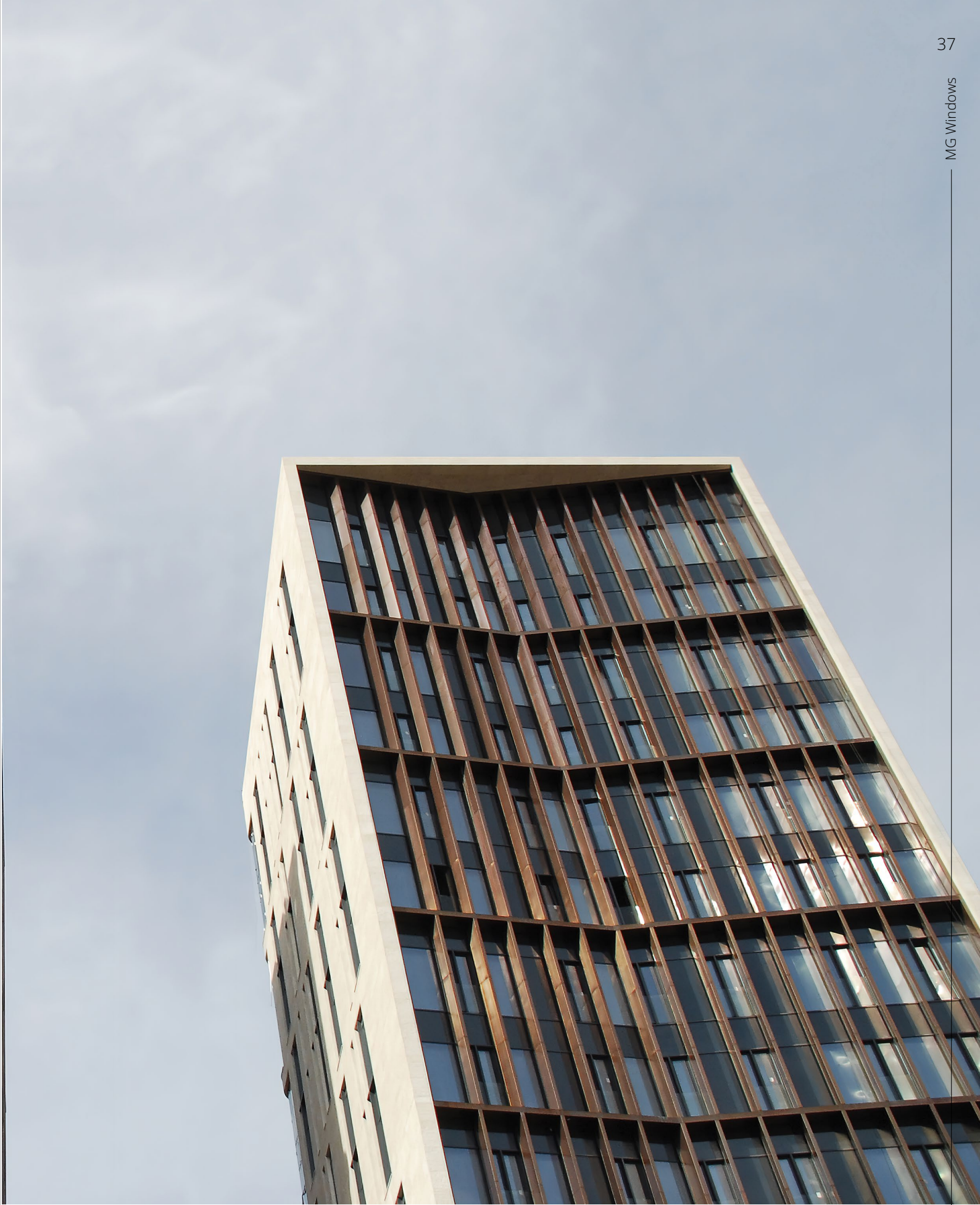
"GARDEN QUARTERS"



LOCATION: 11 Usacheva Street, Moscow
END OF CONSTRUCTION: 2022

The famous residential complex in the very center of Moscow was built according to the principle of enclosed courtyard blocks. Those buildings with various architecture have been glazed in many unconventional ways. Tall oak and aluminum windows are integrated into the timber facade system, offset to the interior of the buildings and complemented by glass French balconies.







RESIDENTIAL COMPLEX

"THE RESIDENCES

MANDARIN ORIENTAL"



LOCATION: 8 Sofiyskaya Embankment, Moscow
END OF CONSTRUCTION: 2021

Mandarin Oriental Hotel Group luxury hotel and unique residences are located on Sofiyskaya Embankment. The ground floors of the buildings are equipped with translucent wood and bronze structures. Large-format wood and aluminum windows, some of which are installed with a noise-reduction system, ideally complement classic white stone and red brick facades.







RESIDENTIAL COMPLEX

"KUTUZOVSKIY XII"



LOCATION: 12 Kutuzovskiy Avenue, Moscow
END OF CONSTRUCTION: 2020

The status of Kutuzovskiy Avenue dictates high quality of life — this house combines classical and modern imagery, blending harmoniously into the surrounding Stalinist Empire style development. Floor-to-ceiling panoramic windows offer breathtaking views of the Ukraina Hotel, Moskva River and skyscrapers of Moscow City.





RESIDENTIAL COMPLEX

“CLOUD NINE”



LOCATION: 9 Bolshaya Polyanka Street, Moscow
END OF CONSTRUCTION: 2021

A luxurious residential complex just minutes from the Kremlin represents a unique renovation project of four historic buildings from the 19th and 20th centuries. Each building has its own concept and is made in a unique style with classic wooden windows with hidden fittings. The buildings are united into a single architectural ensemble by two courtyards.





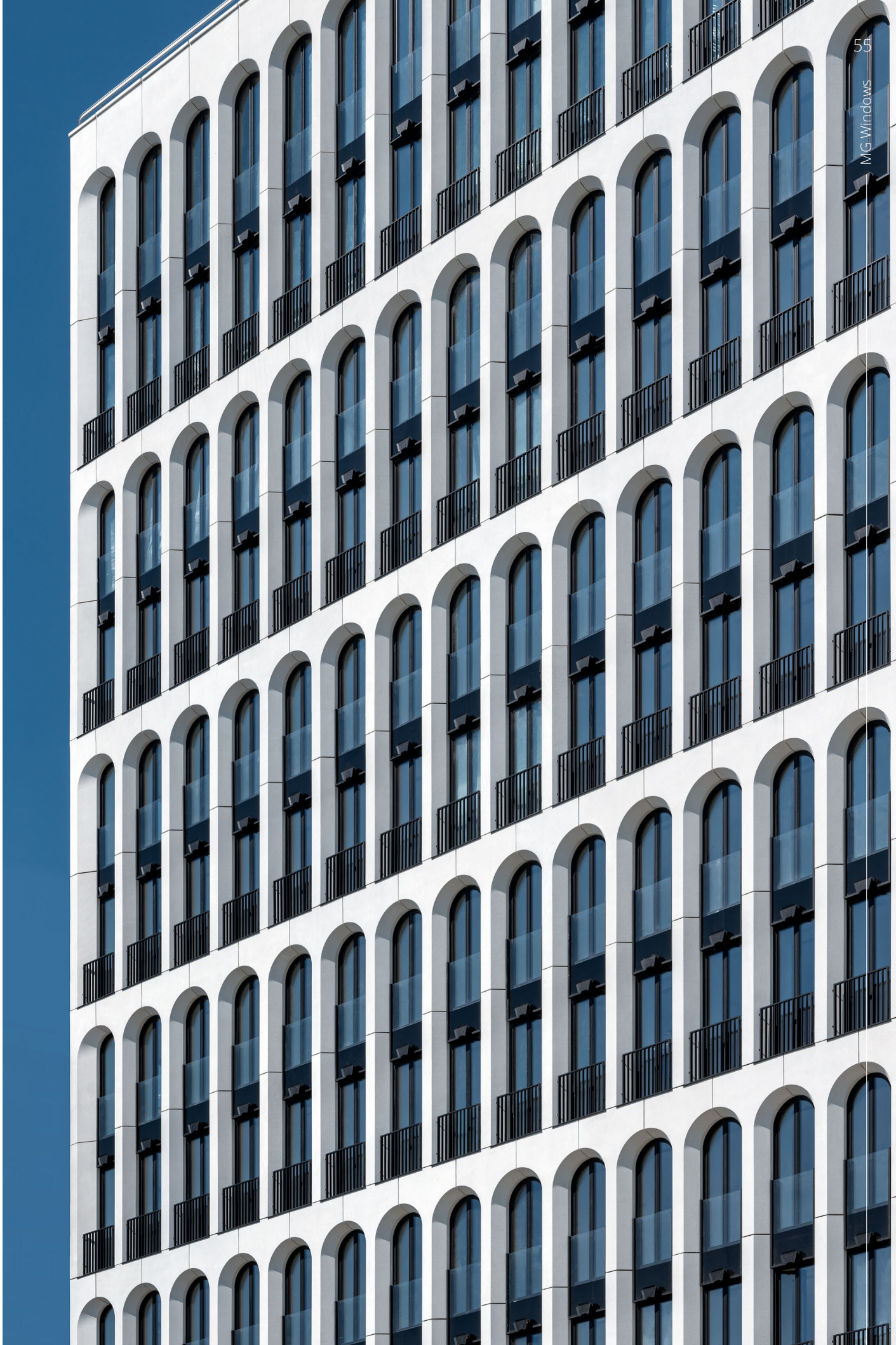
RESIDENTIAL COMPLEX

“BRODSKY”



LOCATION: 16–18 1st Truzhenikov Lane, Moscow
END OF CONSTRUCTION: 2021

The snow-white facade of this elite residential building, located in Khamovniki District near the Moskva River embankment — is a harmonious composition of tall arched windows of different widths, made of oak and bent welded aluminum, with a unique micro-ventilation system.





RESIDENTIAL COMPLEX

"PIROGOVSKAYA 14"



LOCATION: 14 Malaya Pirogovskaya Street, Moscow
END OF CONSTRUCTION: 2022

The house in Pirogovskaya Street has an elegant facade made of hand-formed bricks. The sophisticated interiors of the apartments, created by London design bureau Hesse Macken, are complemented by wood and metal windows with coplanar arrangement of frames and sashes, as well as graceful French balconies.





LOCATION: 15B Malaya Bronnaya Street, Moscow
END OF CONSTRUCTION: 2019

The architecture of this building is based on the classical style with columns, balustrades, sculptures and bas-reliefs, referring to historical architecture of the Patriarch's Ponds area. The image of the building is complemented by laconic oak windows of various shapes and sizes. Their main feature is a unique system of removable overlays, which allows the design and color of the inner part of the profile to be changed without having to dismantle the entire structure.

RESIDENTIAL COMPLEX

"MALAYA BRONNAYA 15"

PRIVATE HOUSE OUTSIDE MOSCOW



LOCATION: Moscow Region
END OF CONSTRUCTION: 2021

A country house, owned by a famous Russian architect, designed in a minimalist style. Red narrow brickwork with dark spots is organically complemented by walnut windows of various sizes and configurations, placing accents in the appearance of the building. Most of them are flush with the facade and equipped with a sophisticated frame contour heating system.



RESIDENTIAL COMPLEX

"STOLESHNIKOV 7"



LOCATION: building 1, 7 Stolesnikov Lane, Moscow
END OF CONSTRUCTION: 2021

Deluxe residential building close to the Bolshoi Theater has retained its historic facade with female herms and vines left over from the famous Leuve wine shop that was located in the building in the early 20th century. Wide oak windows made according to a unique technology with hand-formed mezzanine parts infuse the building with monumentality and status.



RESIDENTIAL COMPLEX

"ZOLOTOY"



LOCATION: 20 Bolotnaya Square, Moscow
END OF CONSTRUCTION: 2022

This exquisite residential complex overlooking the Kremlin is located on Sofiyskaya Embankment and consists of several elite residential buildings with individual facade solutions in the style of an old merchant's Moscow. Wide windows in oak and anodized aluminum blend harmoniously with the clear, symmetrical plastics of the facades and the intricate ornaments that refer to the traditional carved casings.



RESIDENTIAL COMPLEX

"BRYUSOV PEREULOK 2A"

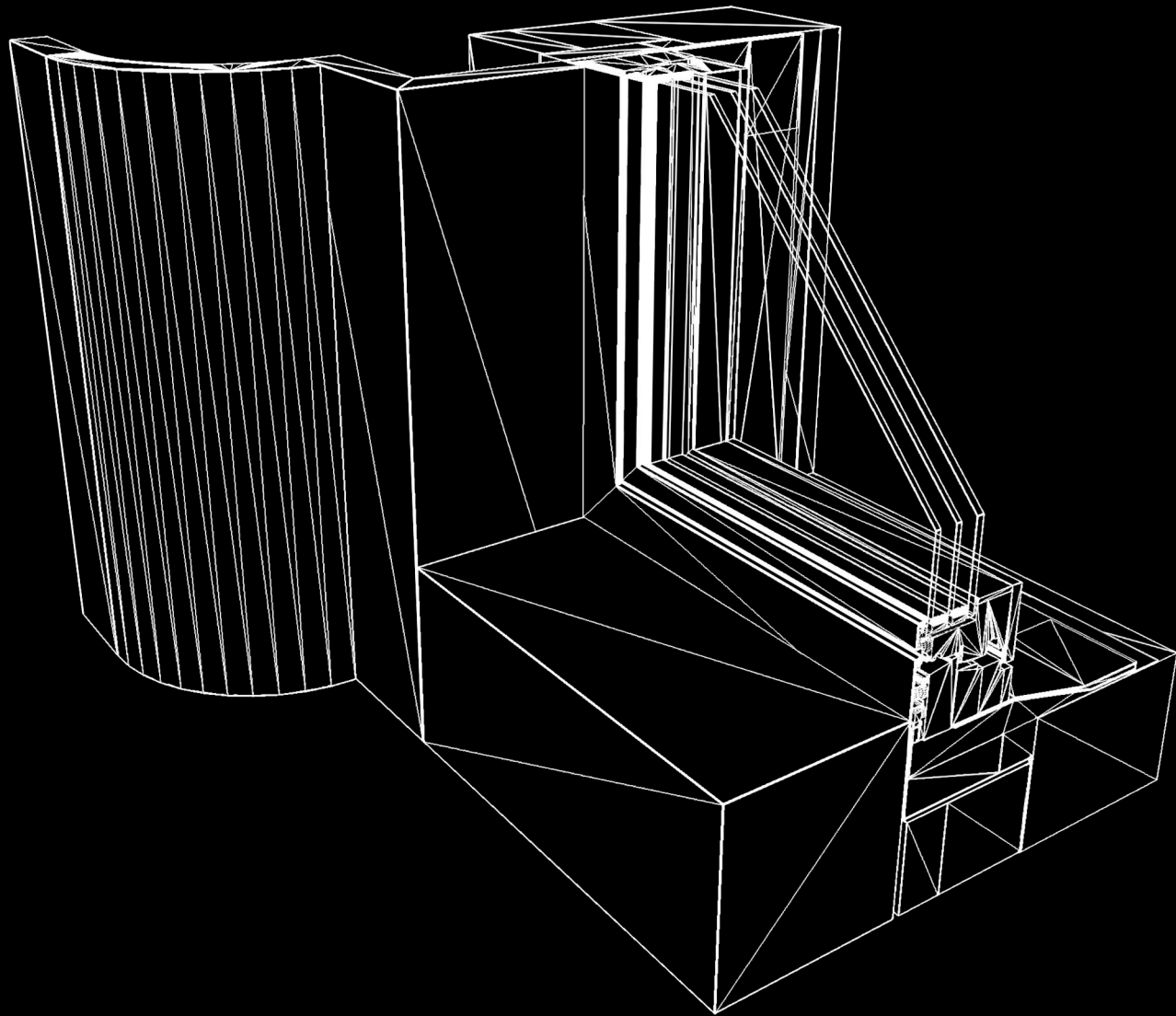


LOCATION: building 1, 2A Bryusov Lane, Moscow
END OF CONSTRUCTION: 2020

Residential building in Bryusov Lane is a modern reinterpretation of the Art Nouveau style. Minimalistic WA78 M windows in oak and aluminum complement the facade's minimalist appearance, while the different shapes of the window openings — from classic rectangular to square and arched — emphasize the rhythm of the facade.

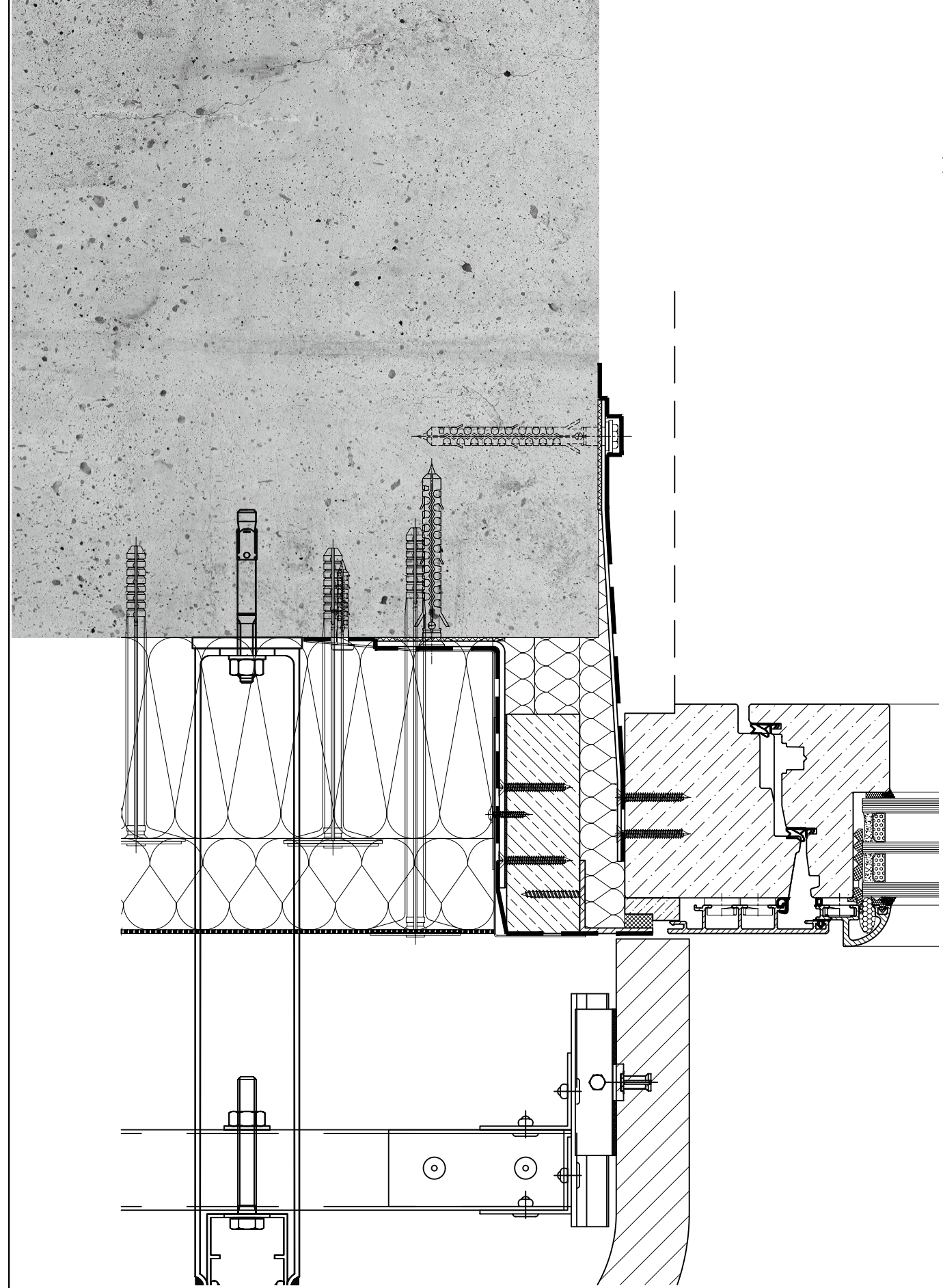


TECHNOLOGIES AND PRODUCTS



UNIQUE INSTALLATION SYSTEM

Windows are primary to the interior. To preserve them during the construction period, we offer a unique installation system, which allows the mounting process to start on site, as soon as two weeks after the contract has been signed. In doing so, the installation of the translucent structures is carried out after both facade work and basic processes associated with the interior are finished, thereby keeping the windows in their original state.



1. Monolith construction

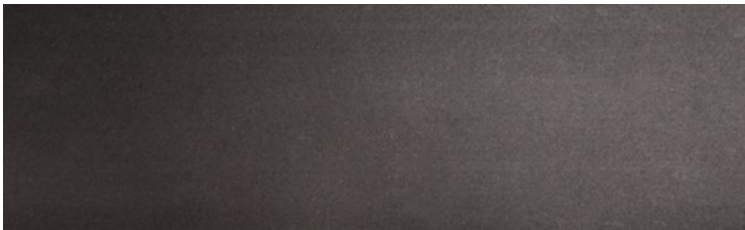
2. Installation of the opening-forming substructure

3. Installation of the facade subsystem, insulation and cladding

4. Installation of the window unit

APPLIED MATERIALS

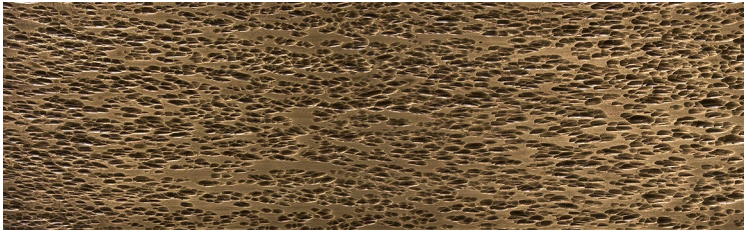
ALUMINUM Anodized



Powder coated



BRASS Art-processed



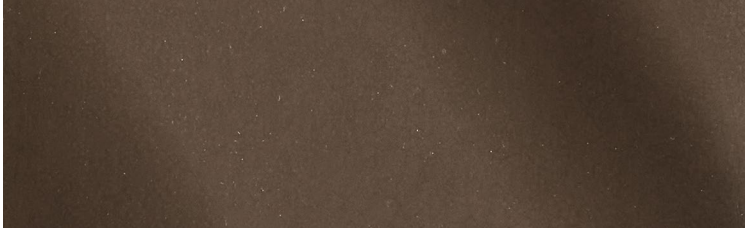
Light brown patina



Brown patina



Dark brown patina



WOOD Pine



Larch



Oak



Thermowood



American walnut



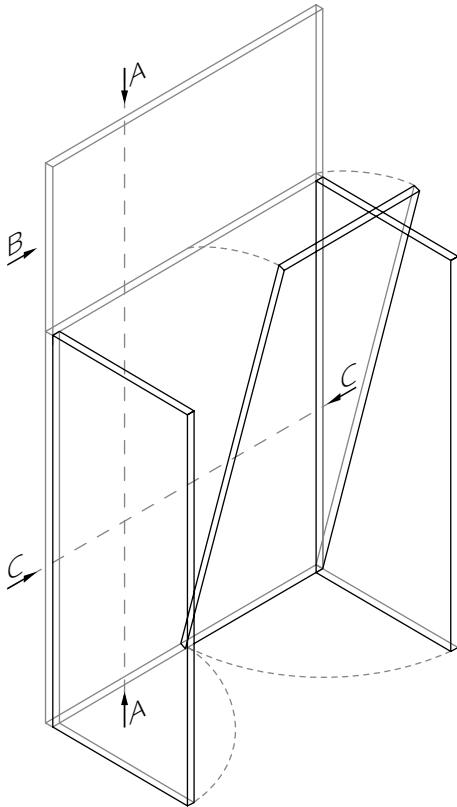
Teak



TIMBER WINDOWS

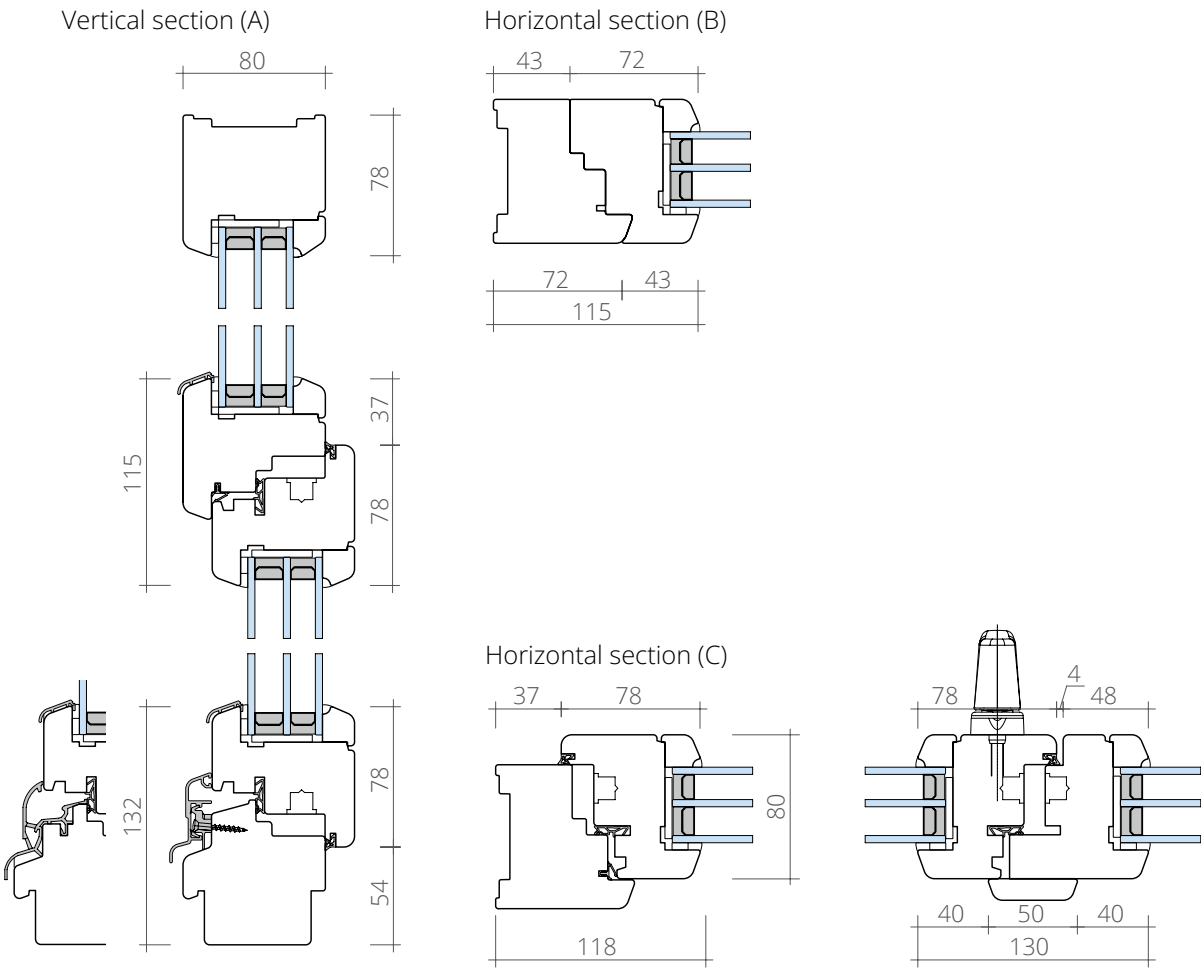
- WW80
- WW98 R
- WW98 C
- WW98 U
- WW98 B
- WW98 L
- WW98 I
- WW98 Z
- 4WH
- WW144 BP

Modern wooden windows are products that have come a long way from being a utilitarian item to becoming a symbol of luxury. In our range of timber profile systems, you will find a product that meets all your requirements.



WINDOW

WW80

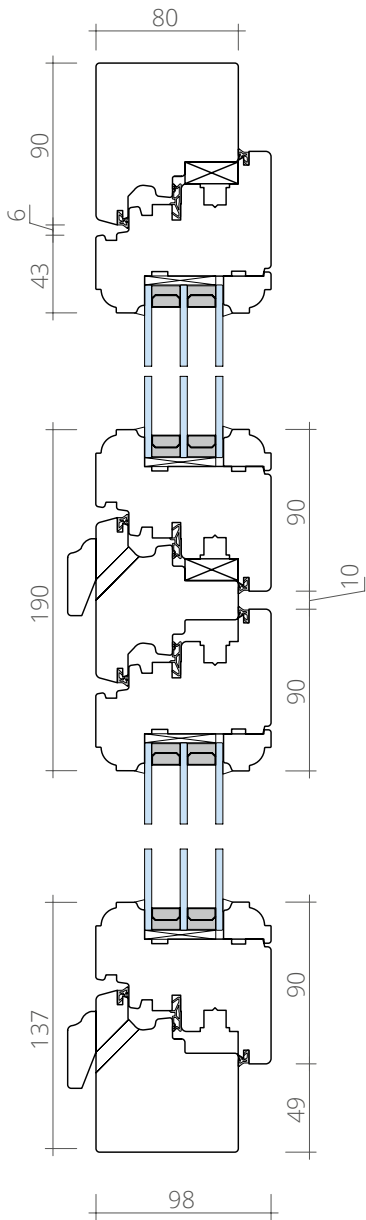


WW80 profile is a basic profile in the range of timber profile systems. It has an austere appearance with clean, well-defined lines. The design provides three sealer contours to ensure high performance and a wide metal element to protect the bottom of the window from moisture.

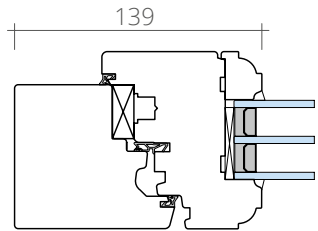
WINDOW WW98 R



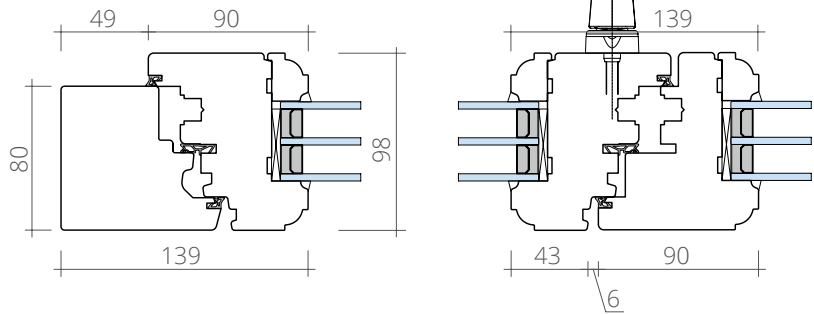
Vertical section (A)



Horizontal section (B)



Horizontal section (C)



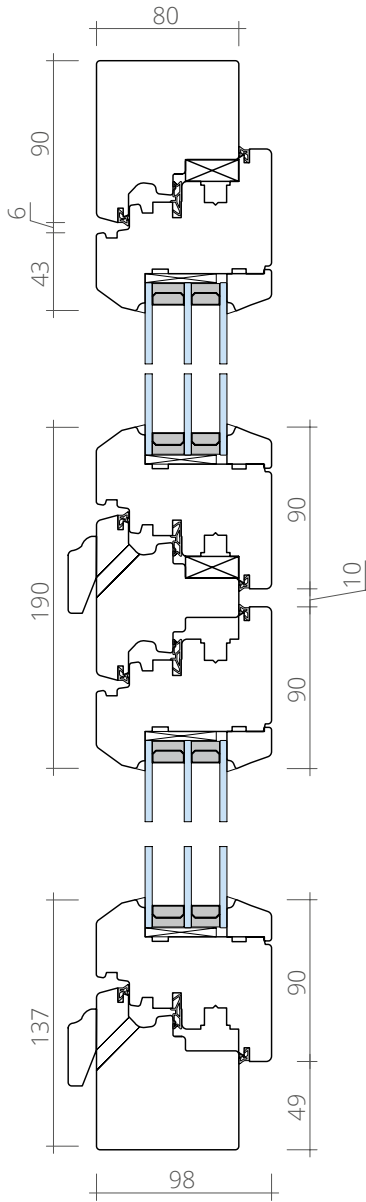
The WW98 series windows are notable for their increased profile thickness and three sealer contours that provide a high level of heat and sound insulation. There are seven unique variations of simple and laconic design to help solve the tasks set by architects.

WINDOW

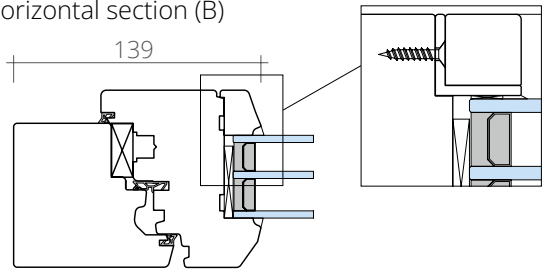
WW98 C



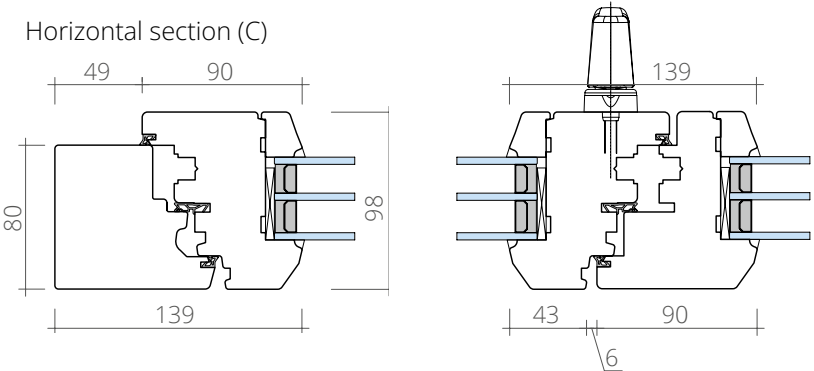
Vertical section (A)



Horizontal section (B)



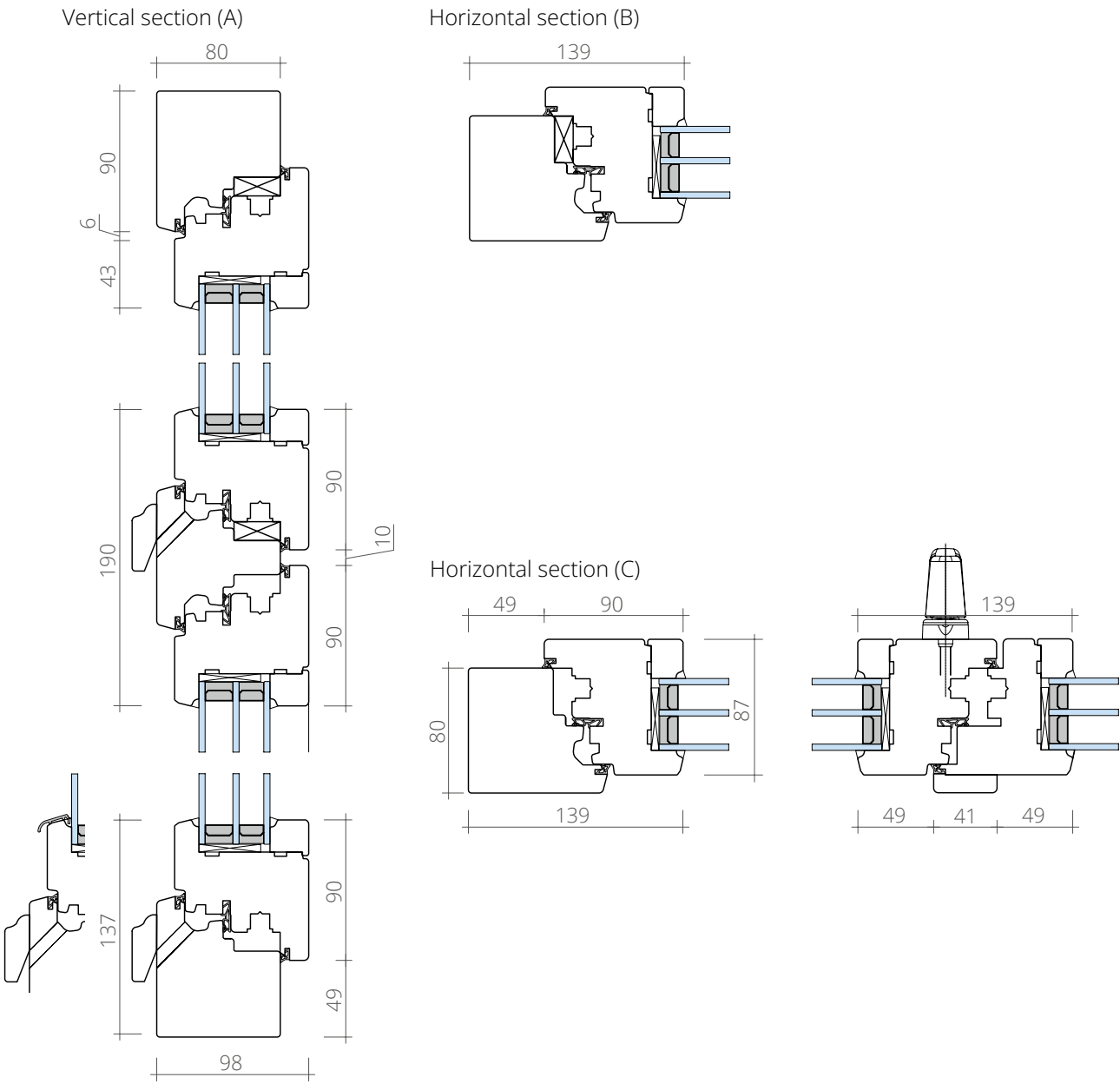
Horizontal section (C)



The WW98 series windows are notable for their increased profile thickness and three sealer contours that provide a high level of heat and sound insulation. There are seven unique variations of simple and laconic design to help solve the tasks set by architects.

WINDOW

WW98 U



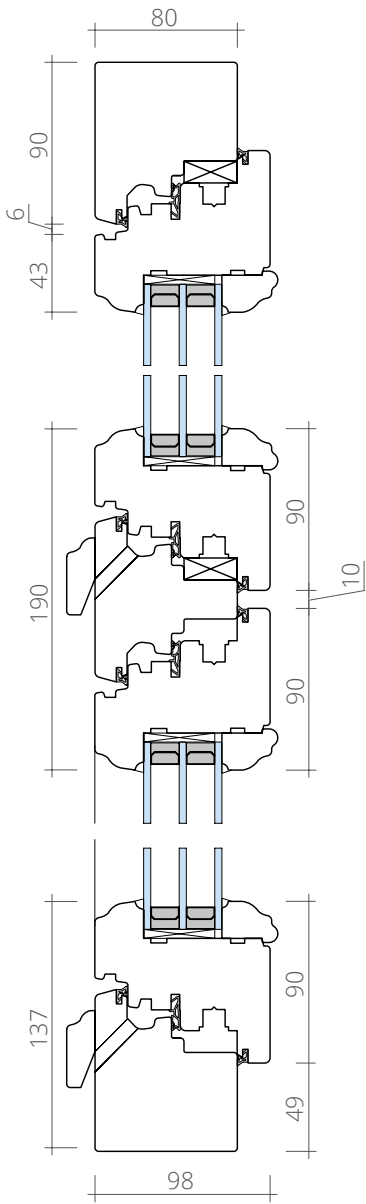
The WW98 series windows are notable for their increased profile thickness and three sealer contours that provide a high level of heat and sound insulation. There are seven unique variations of simple and laconic design to help solve the tasks set by architects.

WINDOW

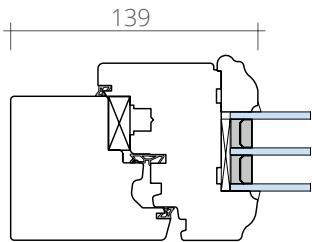
WW98 B



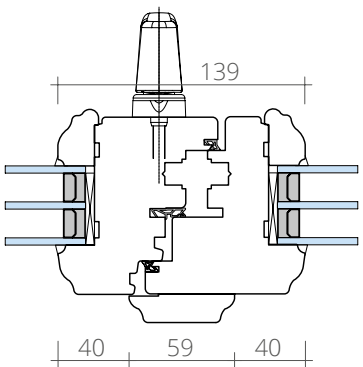
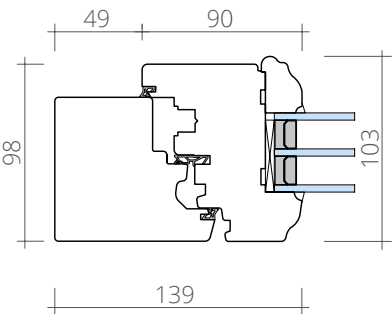
Vertical section (A)



Horizontal section (B)



Horizontal section (C)



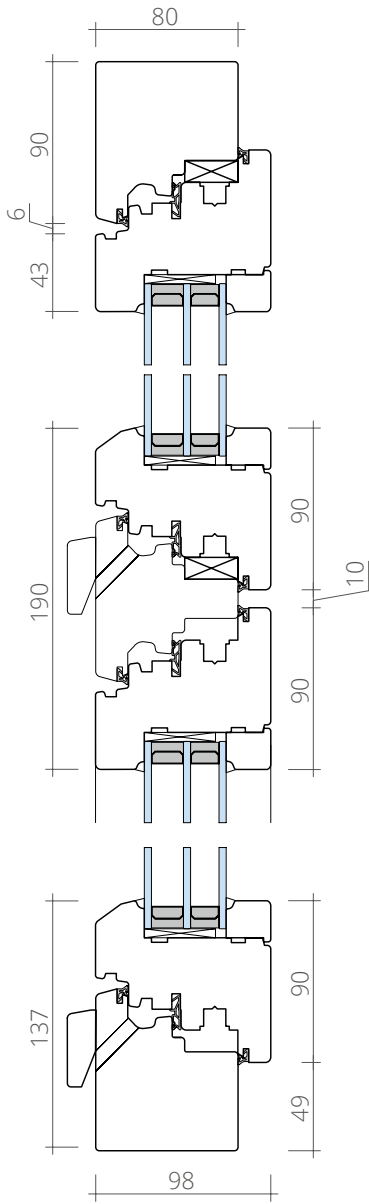
The WW98 series windows are notable for their increased profile thickness and three sealer contours that provide a high level of heat and sound insulation. There are seven unique variations of simple and laconic design to help solve the tasks set by architects.

WINDOW

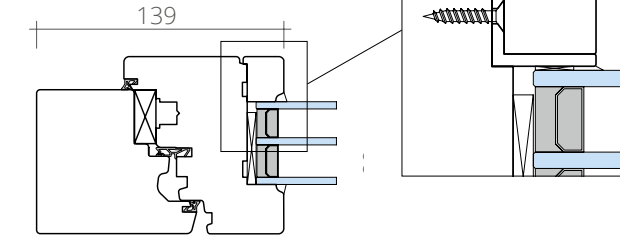
WW98 L



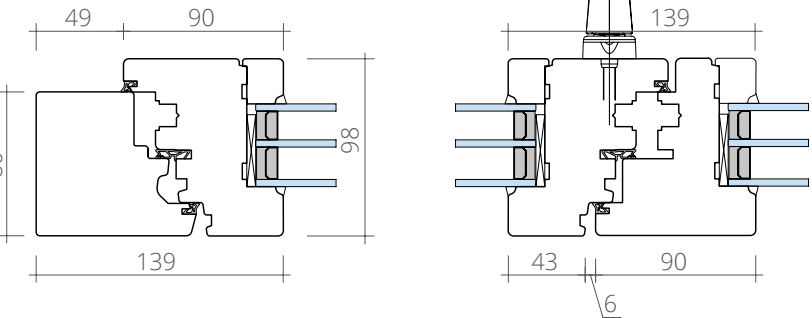
Vertical section (A)



Horizontal section (B)



Horizontal section (C)



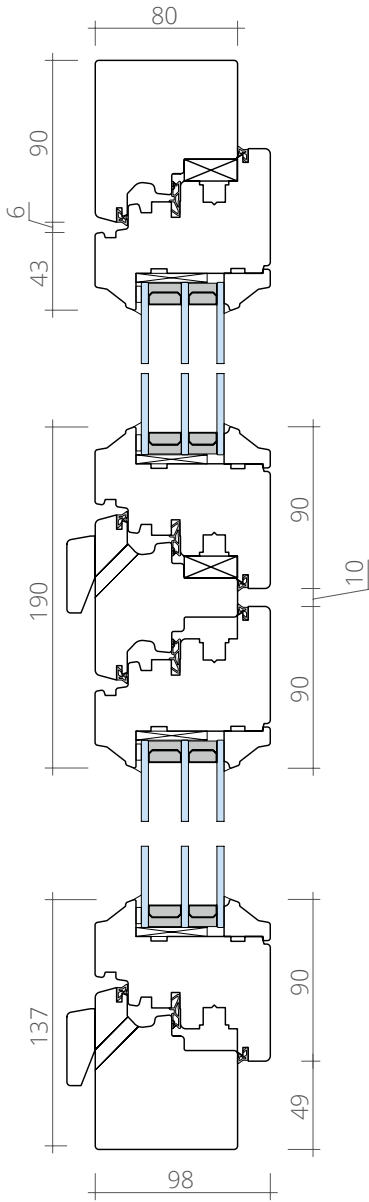
The WW98 series windows are notable for their increased profile thickness and three sealer contours that provide a high level of heat and sound insulation. There are seven unique variations of simple and laconic design to help solve the tasks set by architects.

WINDOW

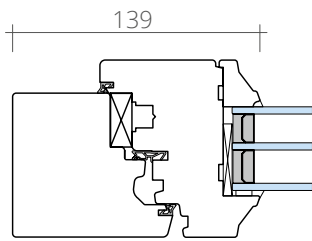
WW98 I



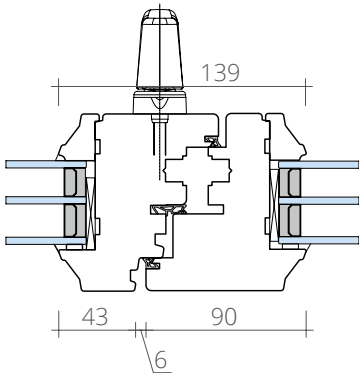
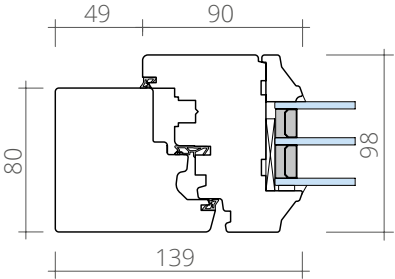
Vertical section (A)



Horizontal section (B)



Horizontal section (C)



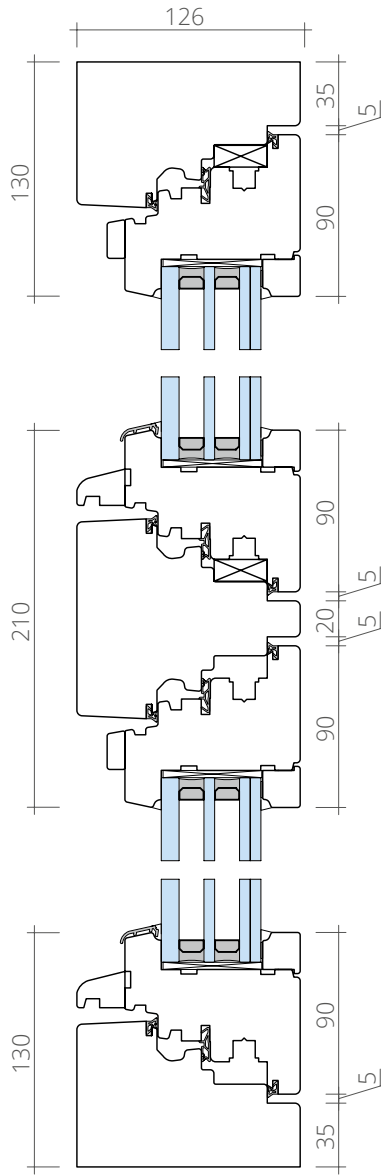
The WW98 series windows are notable for their increased profile thickness and three sealer contours that provide a high level of heat and sound insulation. There are seven unique variations of simple and laconic design to help solve the tasks set by architects.

WINDOW

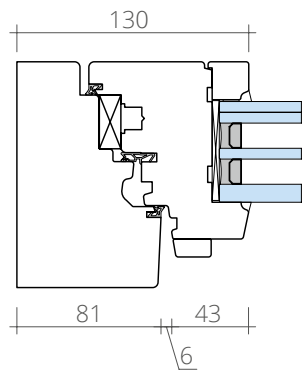
WW98 Z



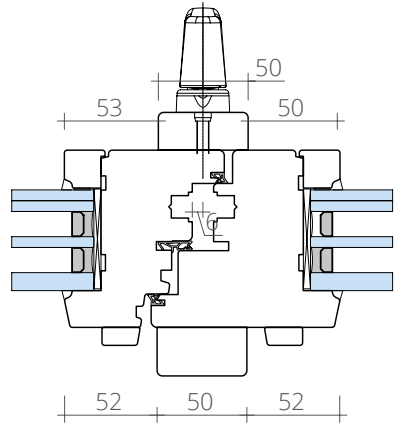
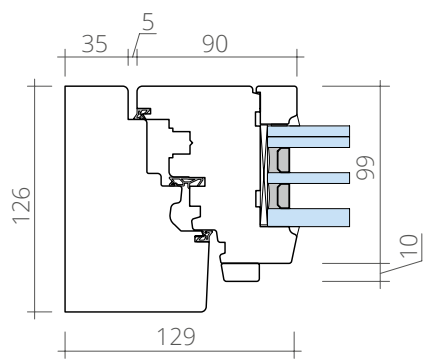
Vertical section (A)



Horizontal section (B)



Horizontal section (C)



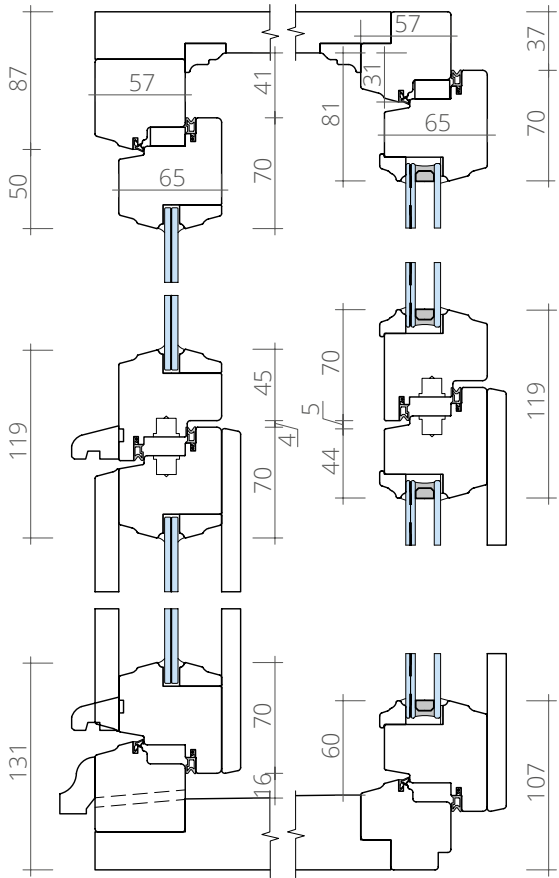
The WW98 series windows are notable for their increased profile thickness and three sealer contours that provide a high level of heat and sound insulation. There are seven unique variations of simple and laconic design to help solve the tasks set by architects.

WINDOW

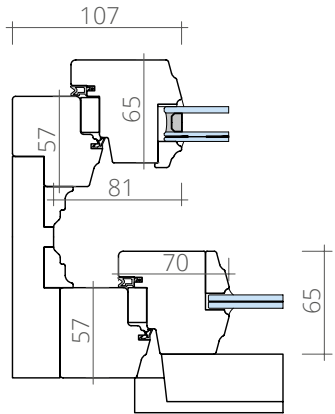
4WH



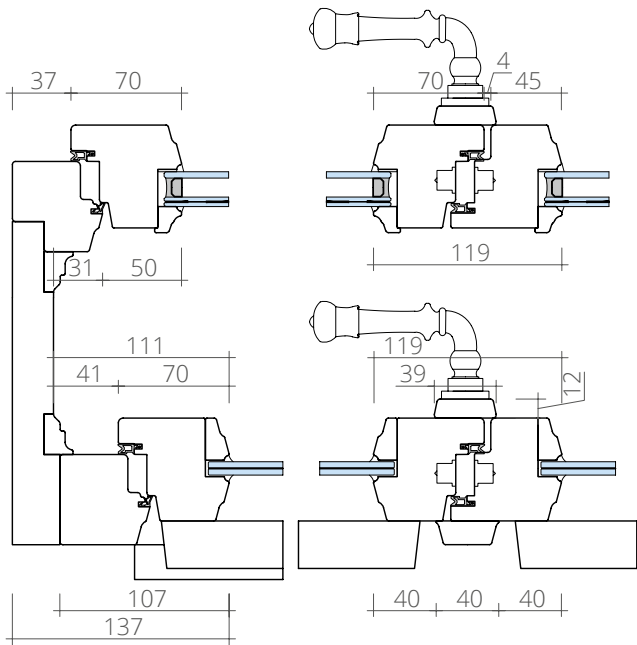
Vertical section (A)



Horizontal section (B)



Horizontal section (C)



This profile is a combination of two proper window blocks integrated into a system. 4WH is perfect for restoration solutions and authenticity maintenance of various buildings.

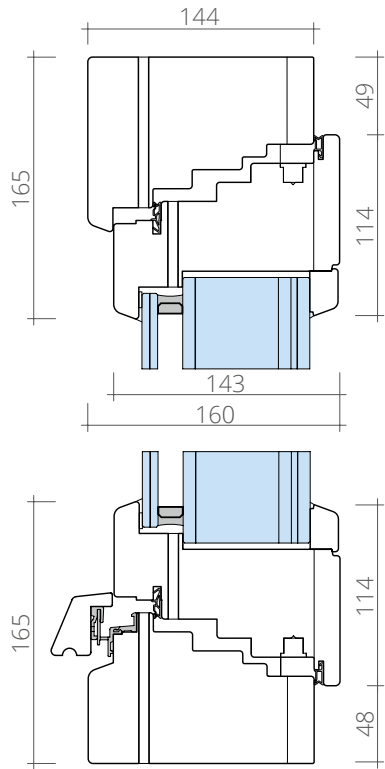
WINDOW

WW144 BP

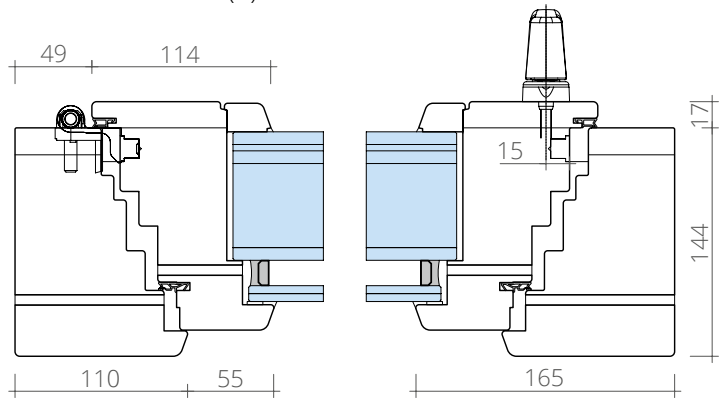


The profile is designed specifically for the objects that require an increased level of security. The product is certified to have the 6a bullet protection level. Traditional design does not attract extra attention and allows a seamless integration of the windows into any interior and exterior.

Vertical section (A)



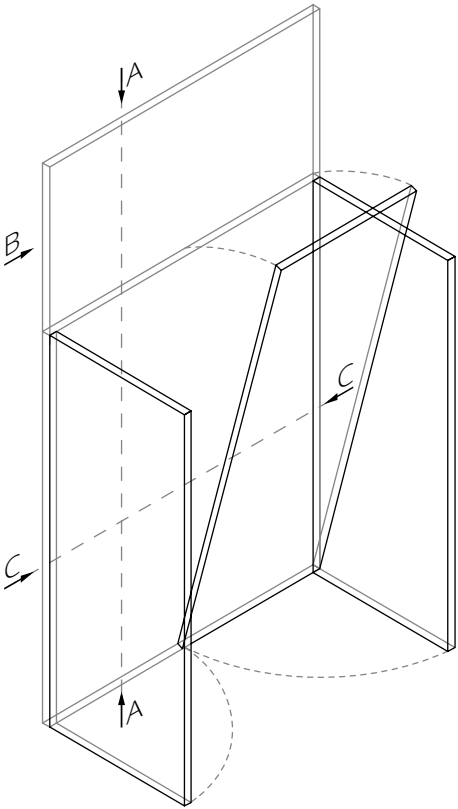
Horizontal section (C)



WOOD-ALUMINUM WINDOWS

- WA78 B, WB78 B
- WA106 B, WB106 B
- WA78 C
- WA78 S4
- WA78 M, WB78 M
- WB106 R
- WB78 I
- WA78 H
- WA98 E

Wood-aluminum windows are the perfect product of translucent structures evolution. Having incorporated the best glazing technologies, wooden windows with external metal frames became a modern classic. We have developed a wide range of profile systems for solving various architectural tasks. Most models have the option of replacing aluminum with patinated brass.

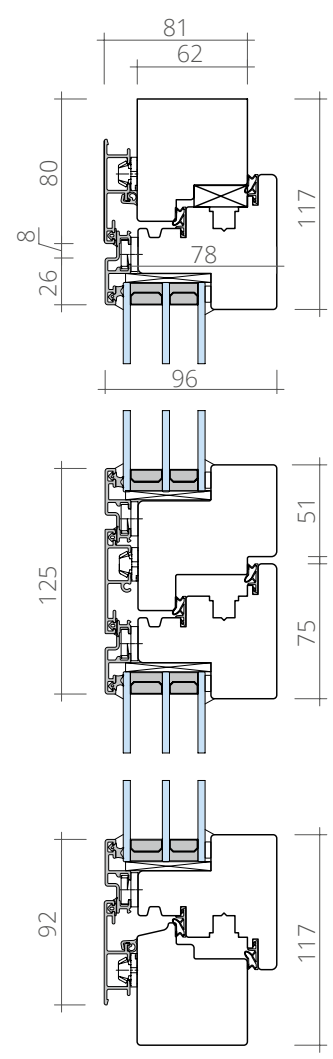


WINDOW
WA78 B
WB78 B

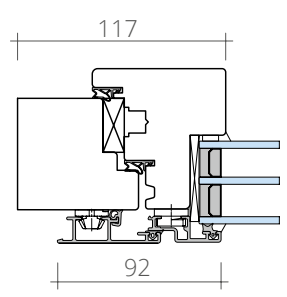


Aluminum
Brass

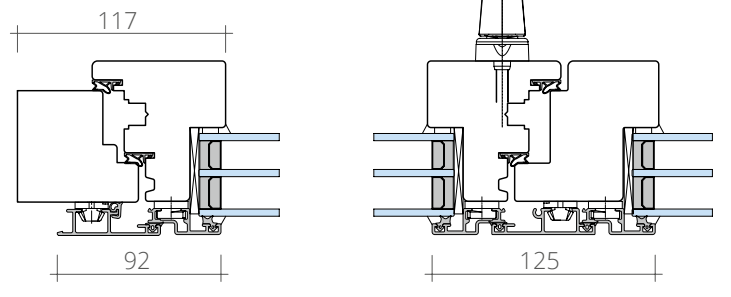
Vertical section (A)



Horizontal section (B)



Horizontal section (C)

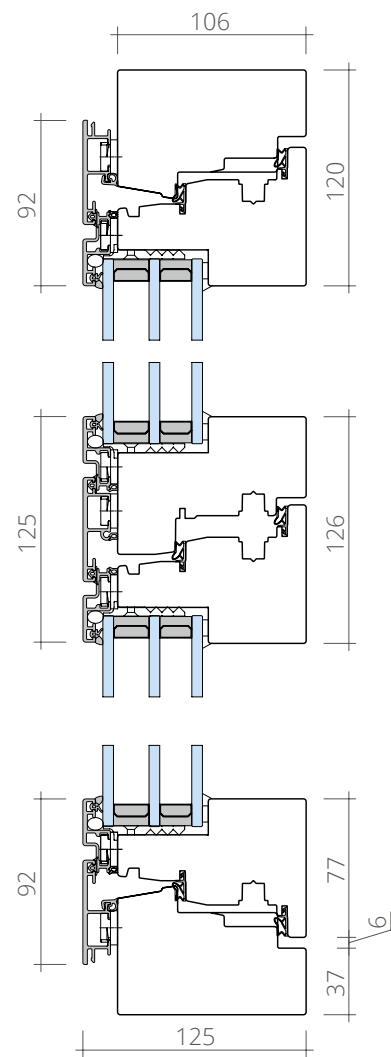


This profile is the basis of the wood-aluminum window systems range. With its versatile minimalist design, it can be combined with various architectural styles. The profile can be made with either aluminum or brass flashing, patinated in various colors.

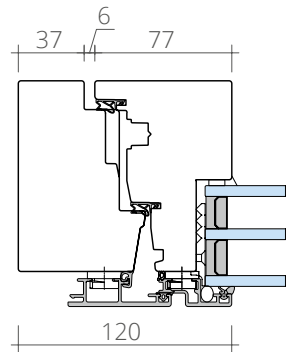
WINDOW
WA106 B
WB106 B



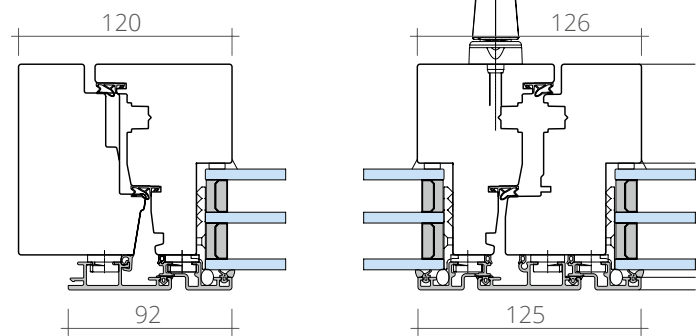
Vertical section (A)



Horizontal section (B)



Horizontal section (C)

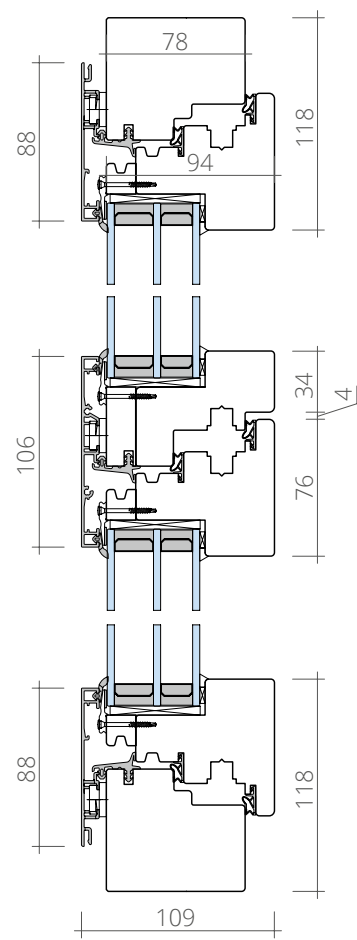


The profile is a leader of our heat and sound insulation range due to its increased 106 mm depth. Thanks to its solid structure, it is suitable for the largest window sizes, and the flat outer cover gives it a neat look. The profile can be made with either aluminum or brass flashing, patinated in various colors.

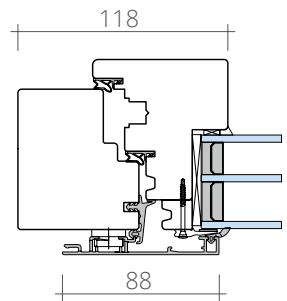
WINDOW WA78 C



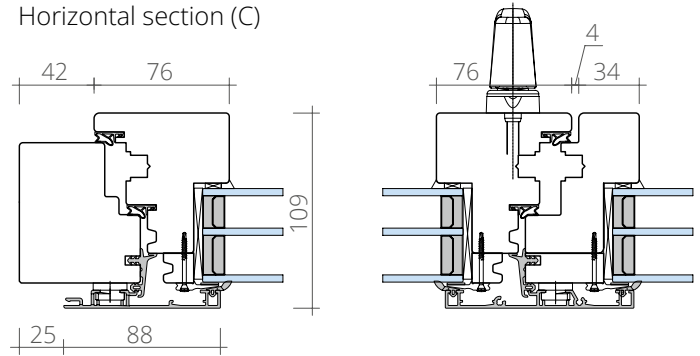
Vertical section (A)



Horizontal section (B)



Horizontal section (C)

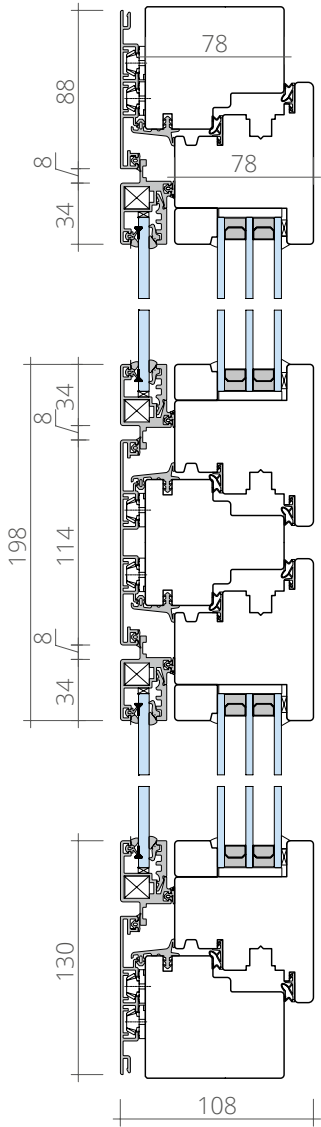


There is nothing superfluous in the structure and design of this profile — only sharp lines and thought-out functionality, which allows the facade to virtually adjoin to the glass.

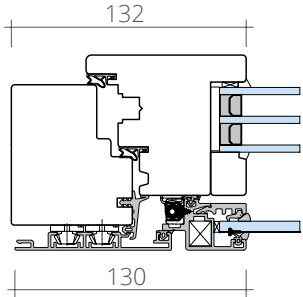
WINDOW WA78 S4



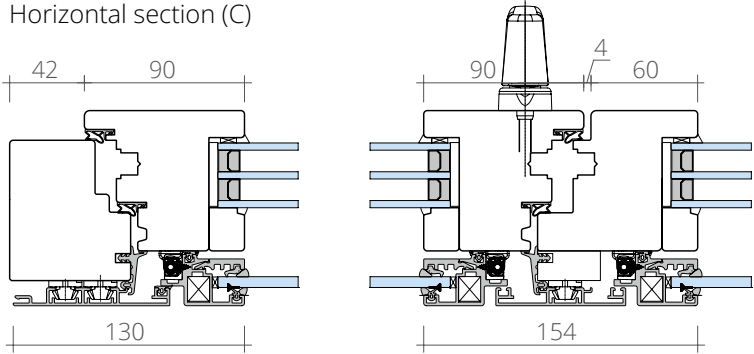
Vertical section (A)



Horizontal section (B)



Horizontal section (C)

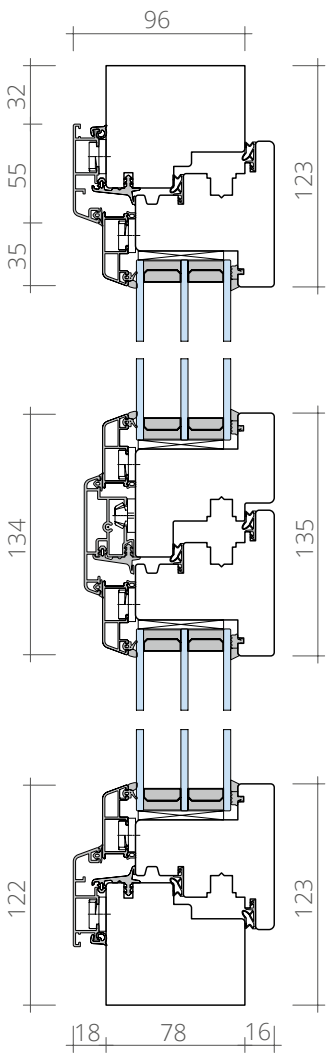


The profile structure combines elegance, reliability, as well as improved air and water permeability, sound and heat insulation, achieved through the use of an additional metal sash.

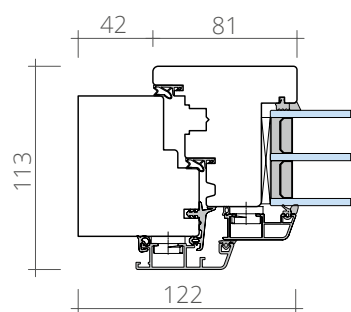
WINDOW
WA78 M
WB78 M



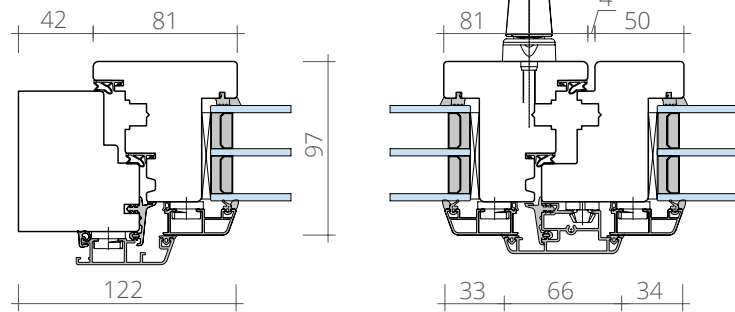
Vertical section (A)



Horizontal section (B)



Horizontal section (C)

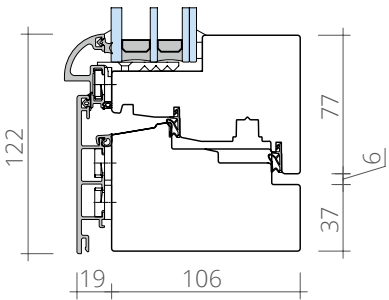
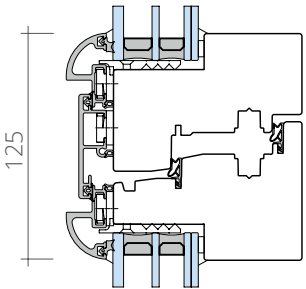
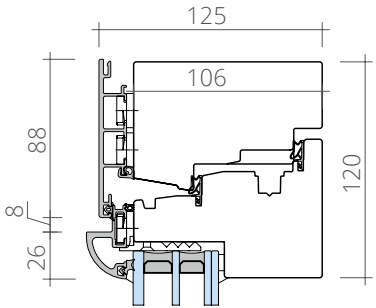


The classic wood-aluminum profile is a perfect combination of a wooden base and a two-tiered exterior metal finish. Four compaction circuits provide maximum protection against the atmospheric effects. The profile can be made with either aluminum or brass flashing, patinated in various colors.

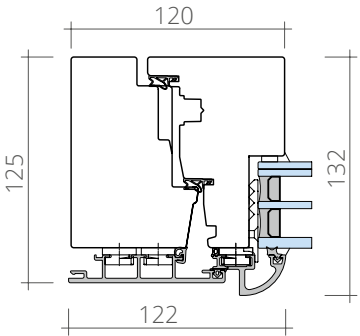
WINDOW WB106 R



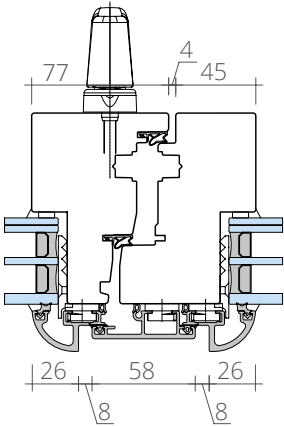
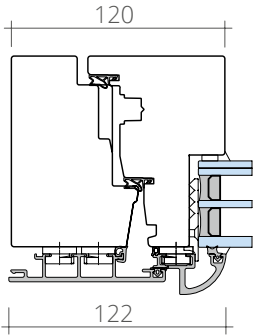
Vertical section (A)



Horizontal section (B)



Horizontal section (C)

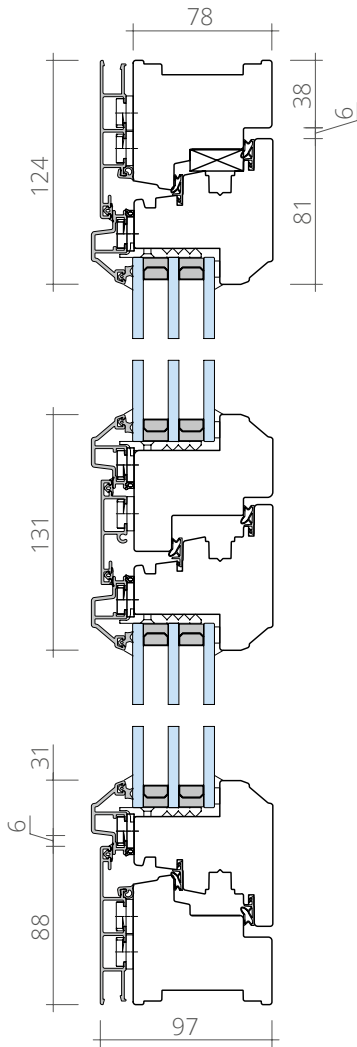


The wood-brass profile with a 106 mm system depth incorporates all the best performance characteristics. The modern organic appearance of the product is achieved through a combination of smooth lines on the outside of the window and strict contours on the inside.

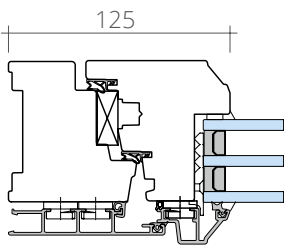
WINDOW WB78 I



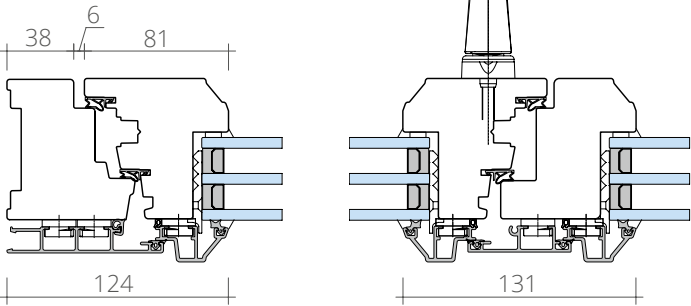
Vertical section (A)



Horizontal section (B)



Horizontal section (C)

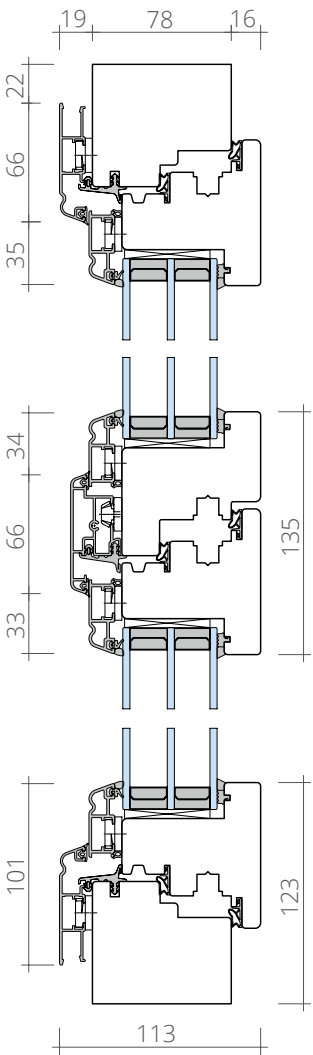


Combining technology, comfort and style with a retro touch, this wood-brass profile with a coplanar design on the inside and classy, elegant-looking brass on the outside is perfect for both modern objects and restorations.

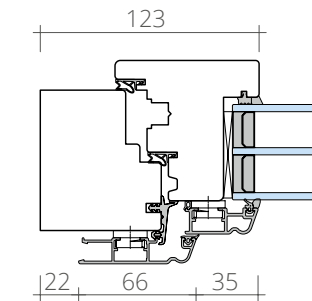
WINDOW WA78 H



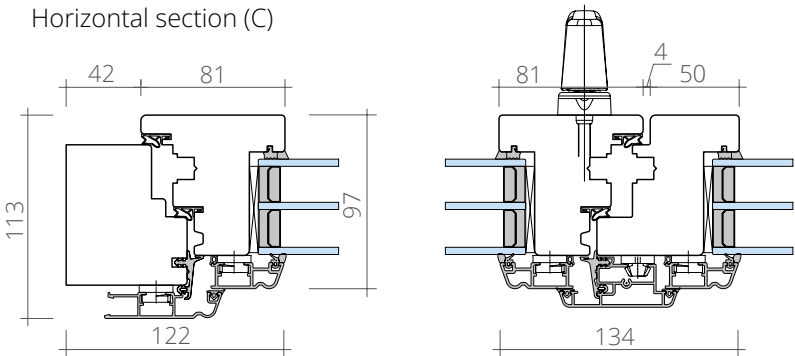
Vertical section (A)



Horizontal section (B)

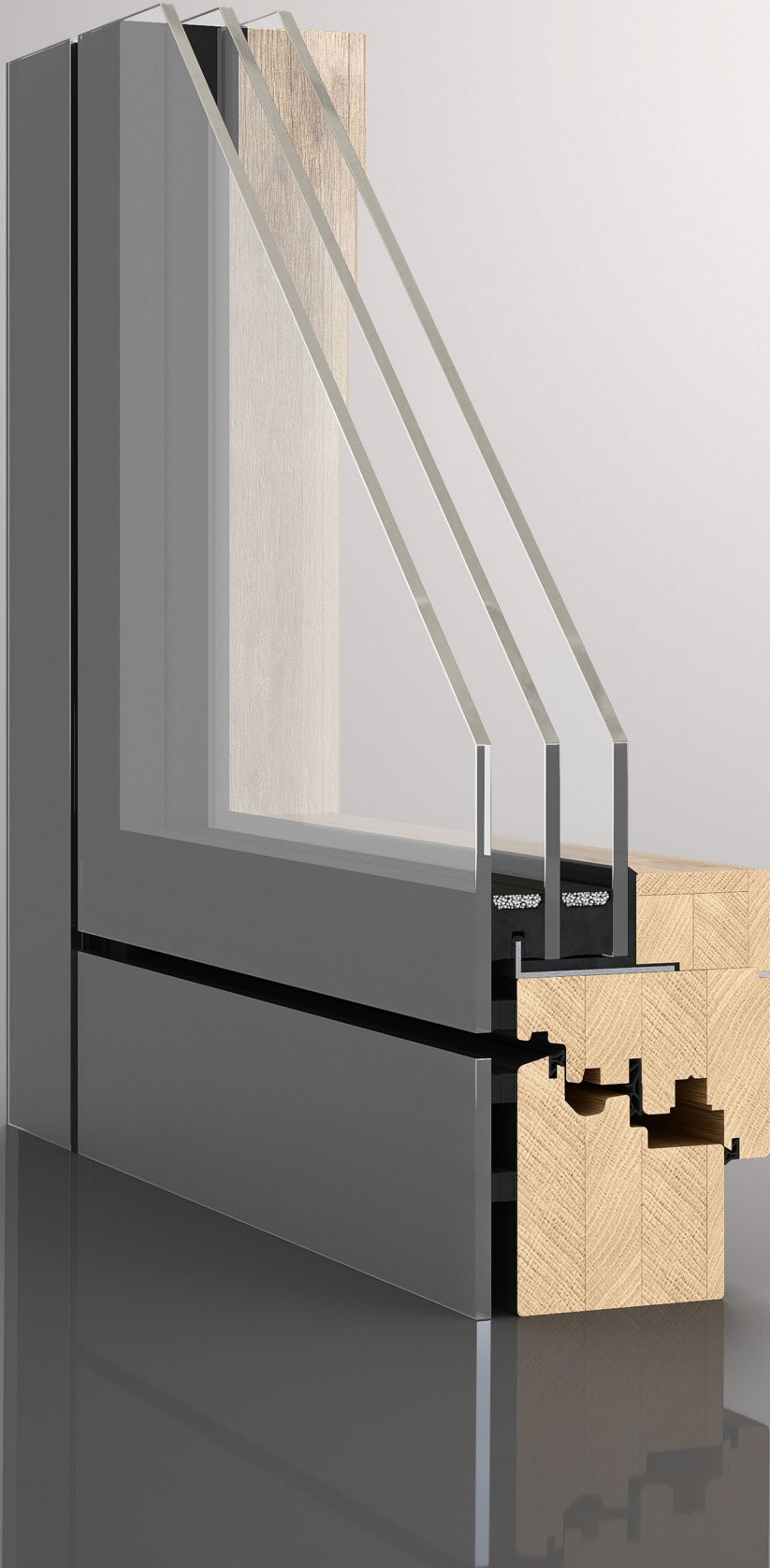


Horizontal section (C)

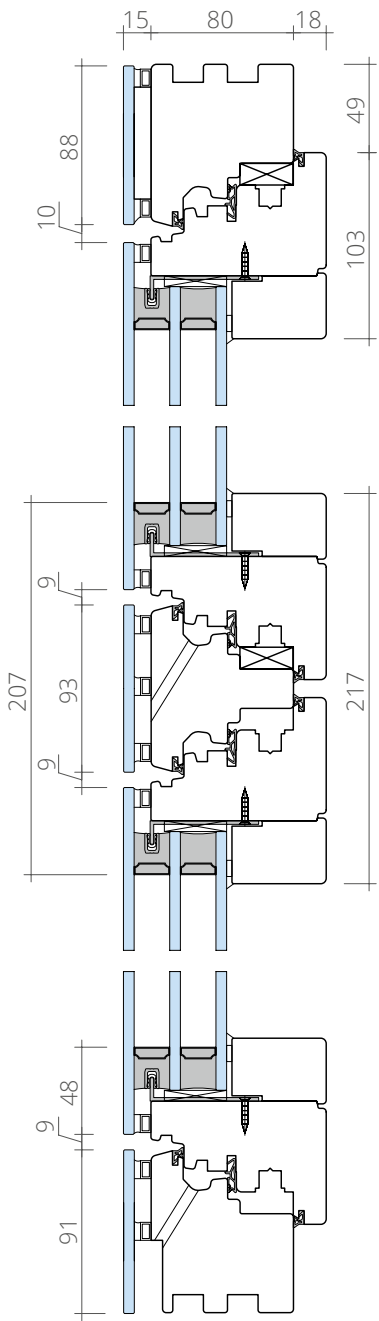


Wood-aluminum profile with pronouncedly graceful lines.

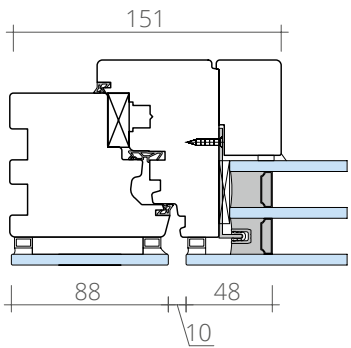
WINDOW WA98 E



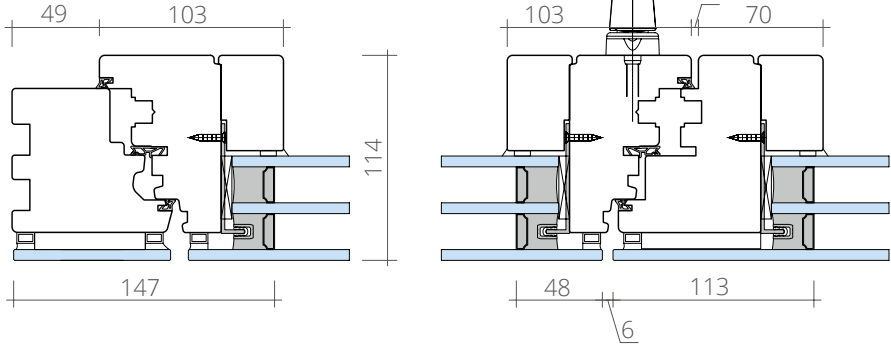
Vertical section (A)



Horizontal section (B)

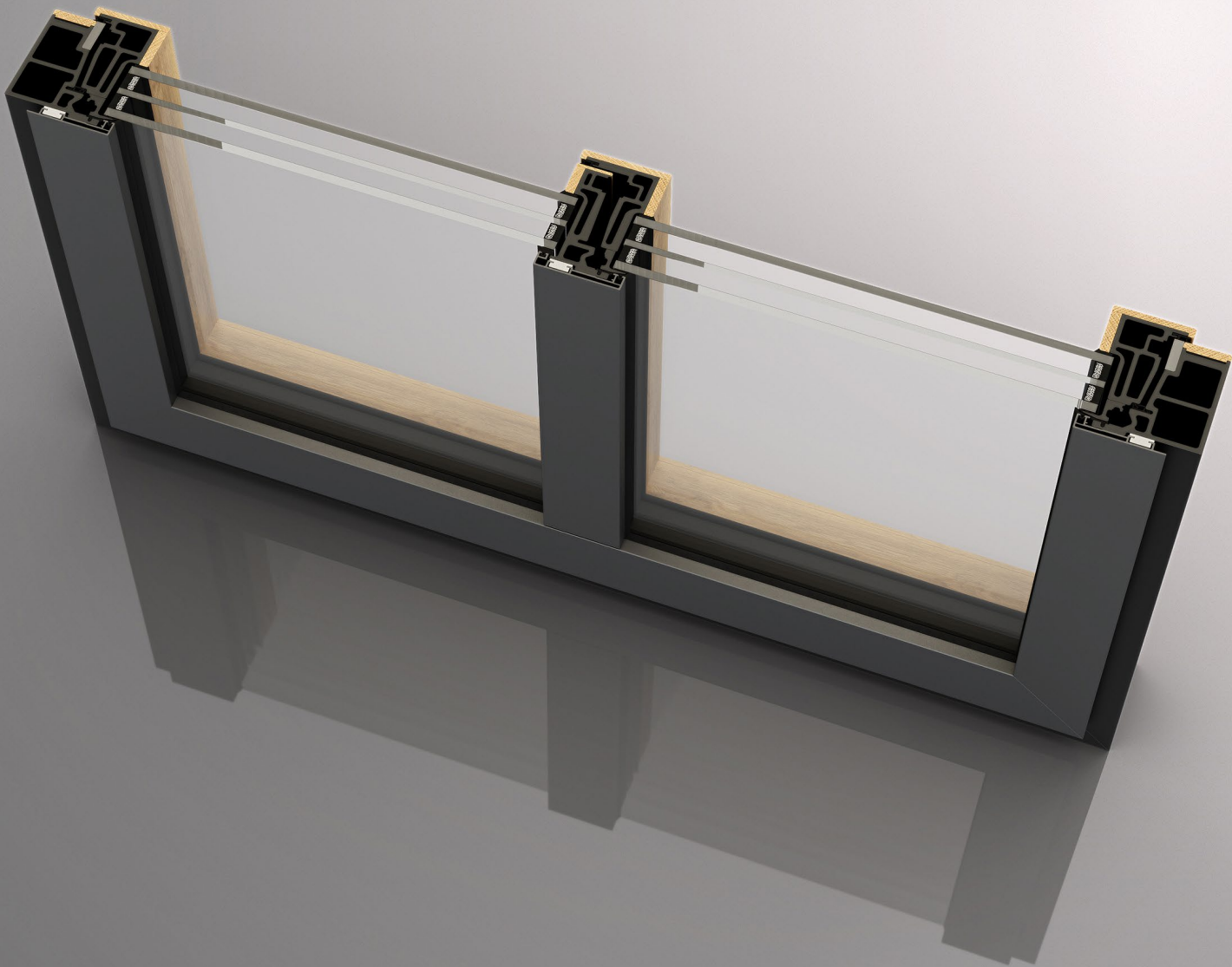


Horizontal section (C)



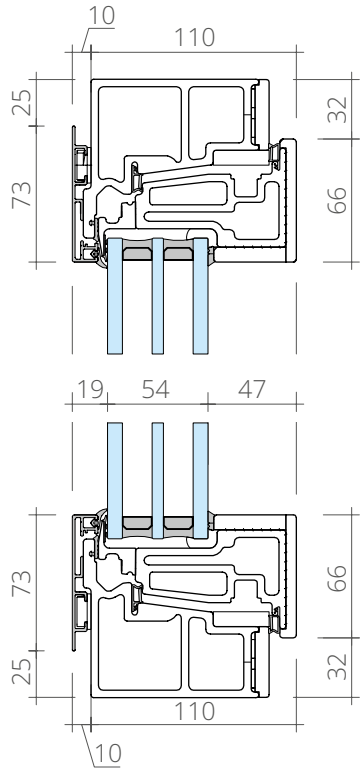
The unique profile with no wood or metal parts visible from the outside is ideal for complete building glazing.

WINDOW KSWA

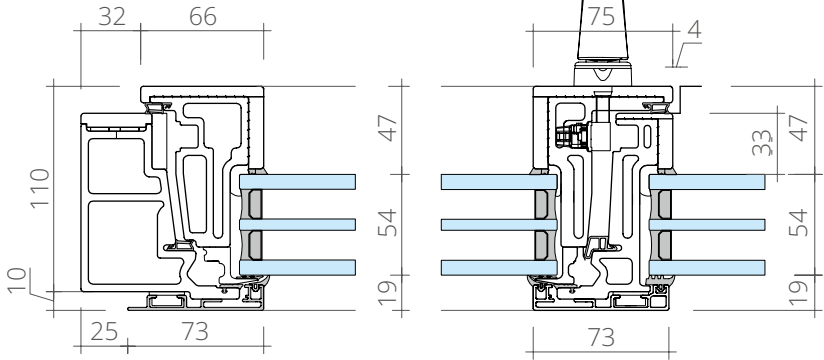


The system was created for window openings with laconic lines. Thanks to its minimalist design, windows of the KSWA series provide the maximum possible amount of light in the room. High-tech solutions guarantee absolute stability of the structure even with very impressive sizes. An additional advantage of the system is the variability of the external window finish, which can be made not only from traditional aluminum alloy but also from stainless steel, corten, copper or brass.

Vertical section (A)

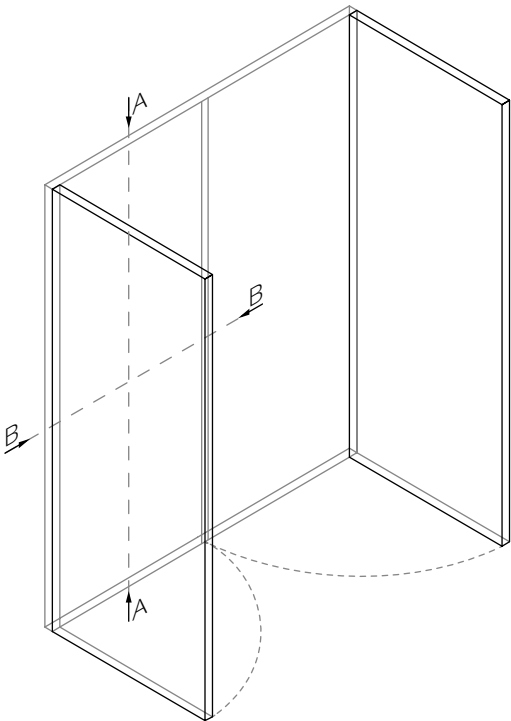


Horizontal section (B)



DWW/OO
DWW/UO
DWA/OO
DWB/OO

The doors are always in the center of attention. An entrance lobby is the face of any building. When creating the profiles, we took into account the high intensity of door operation, their important role in organizing an access to a room, as well as all the necessary functional indicators.

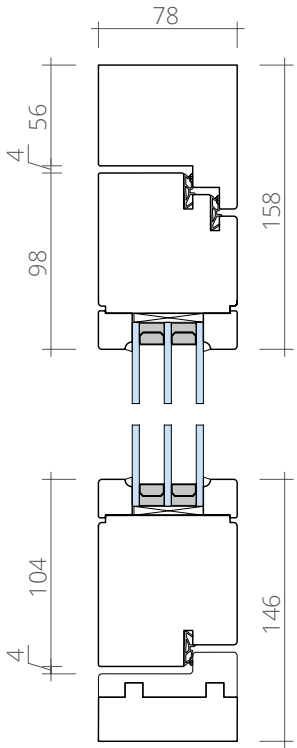


DOOR

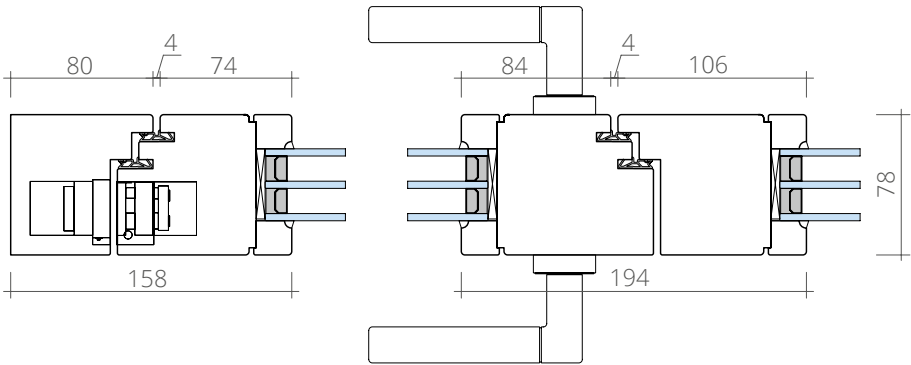
DWW/00



Vertical section (A)



Horizontal section (B)

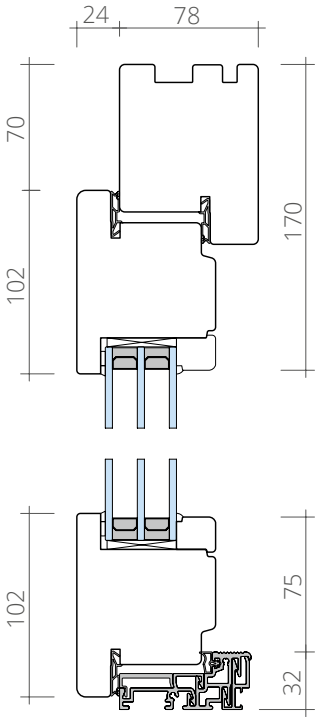


DOOR

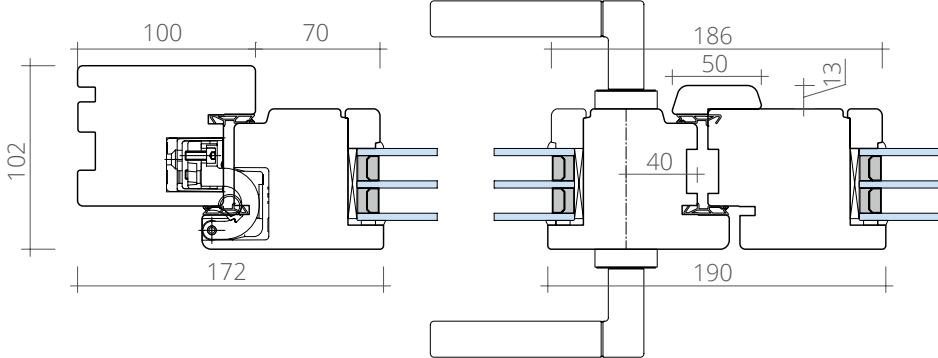
DWW/UO



Vertical section (A)



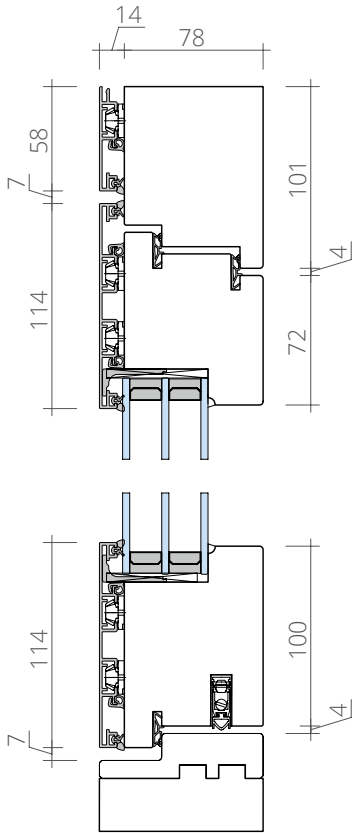
Horizontal section (B)



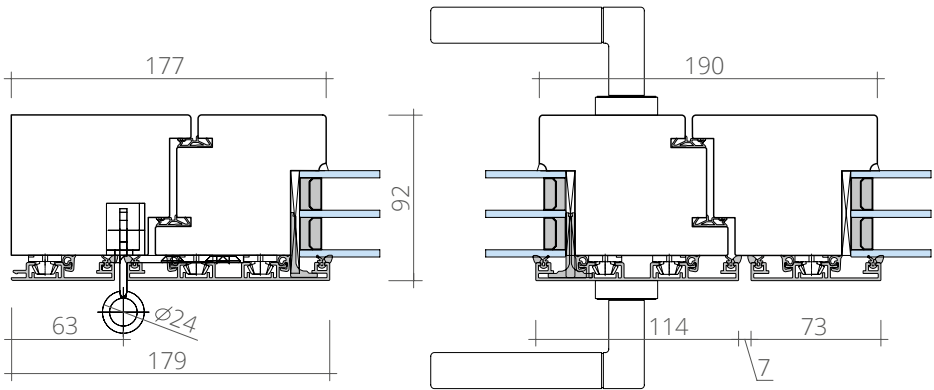
DOOR DWA/00



Vertical section (A)



Horizontal section (B)

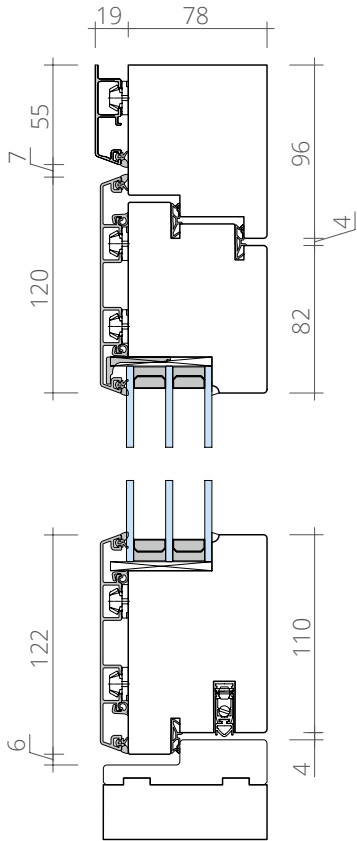


DOOR

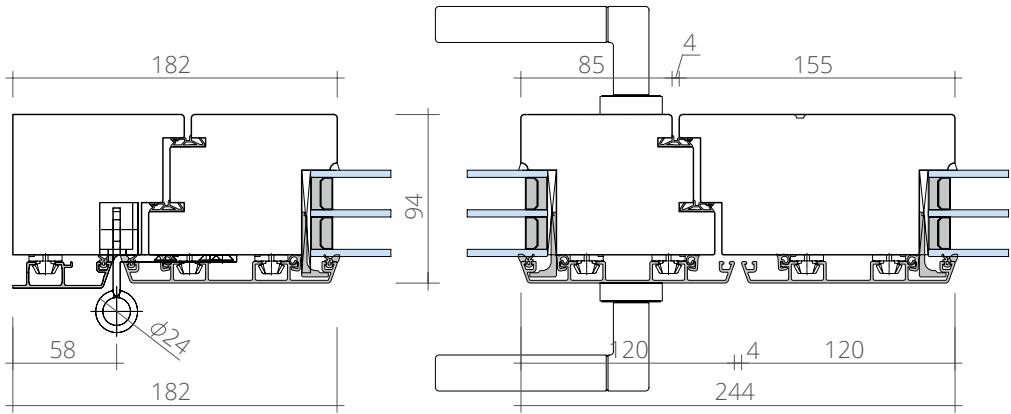
DWB/00



Vertical section (A)



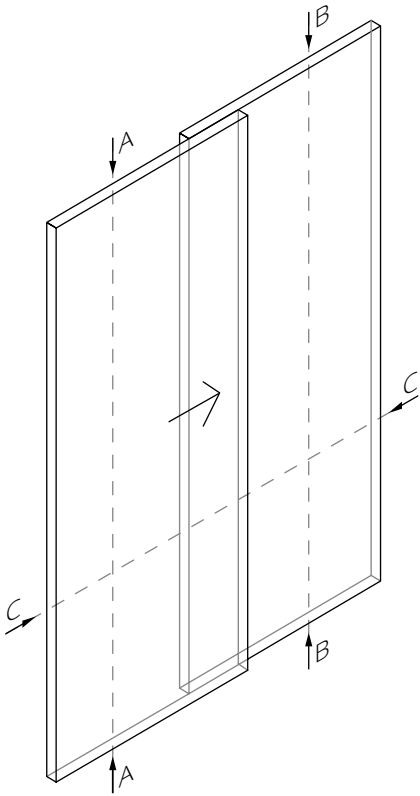
Horizontal section (B)



SLIDING SYSTEMS

HSWW
HSA
HSAI

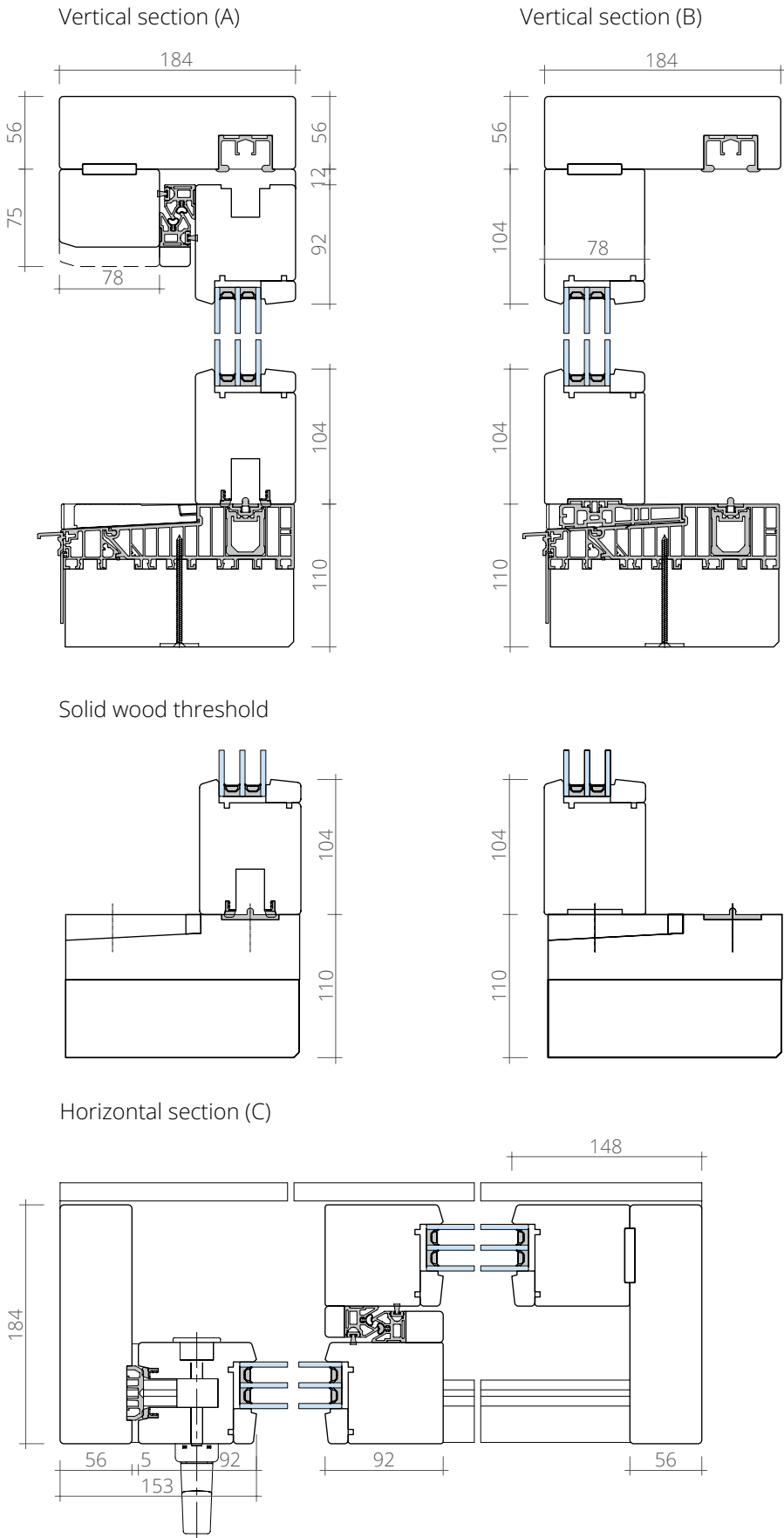
Moving glass walls has become an easy thing! The lift-and-slide structures of the HS family allow the glazing of large and very large openings that are inaccessible to pivot door systems.



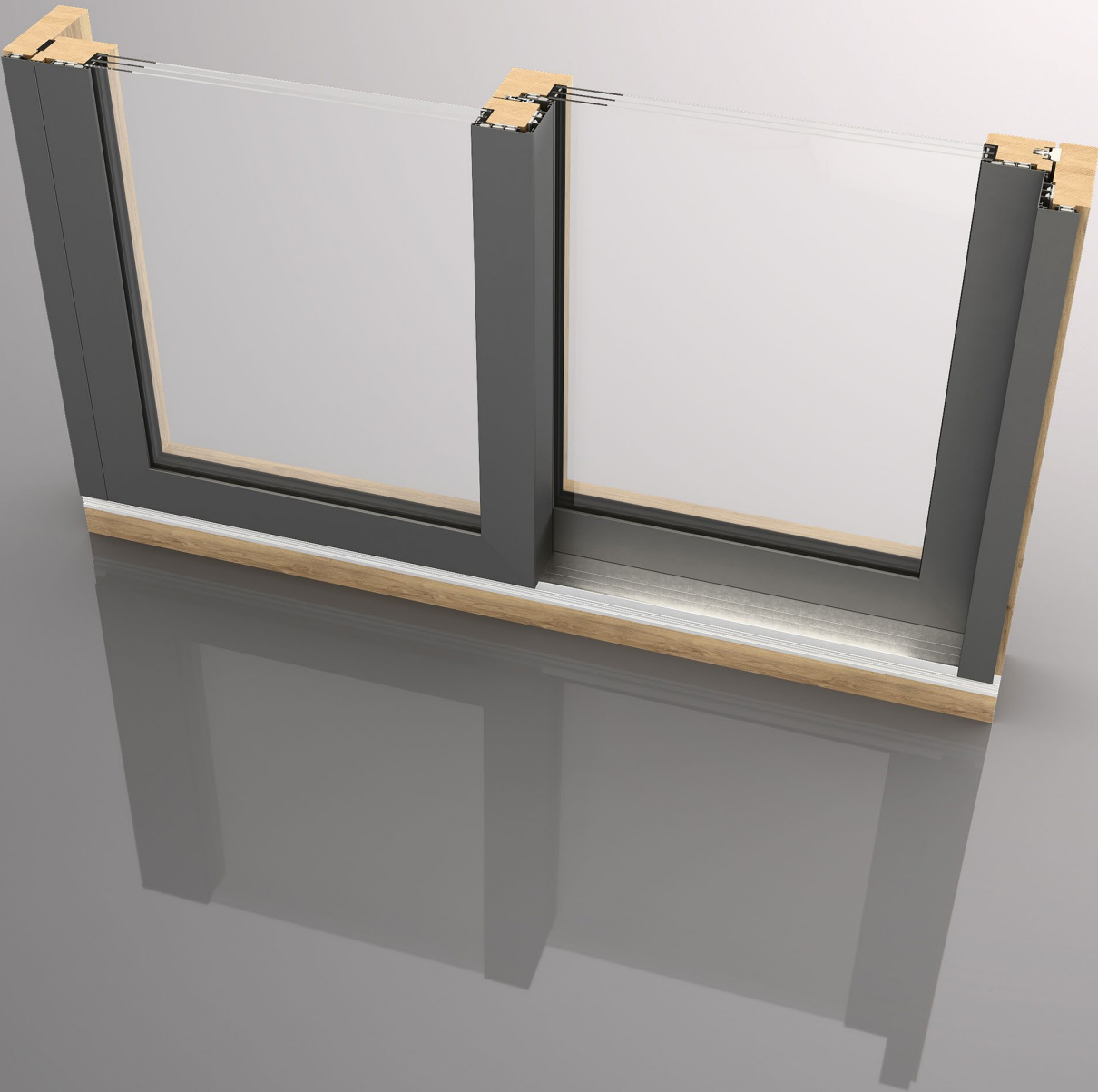
SLIDING SYSTEM HSWW



A classic lift-and-slide system, implemented in a fully wooden profile.

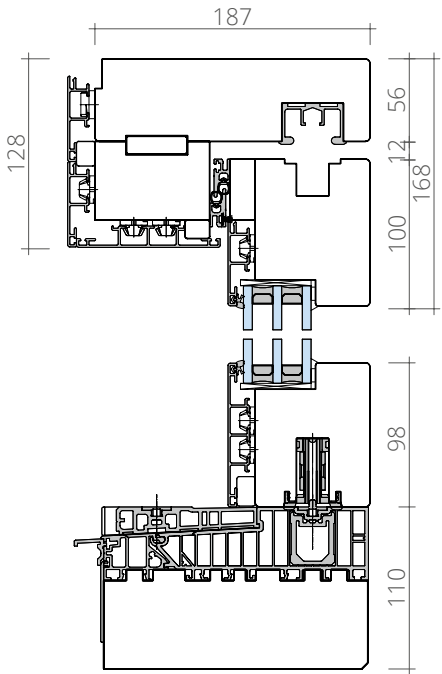


SLIDING SYSTEM HSPA

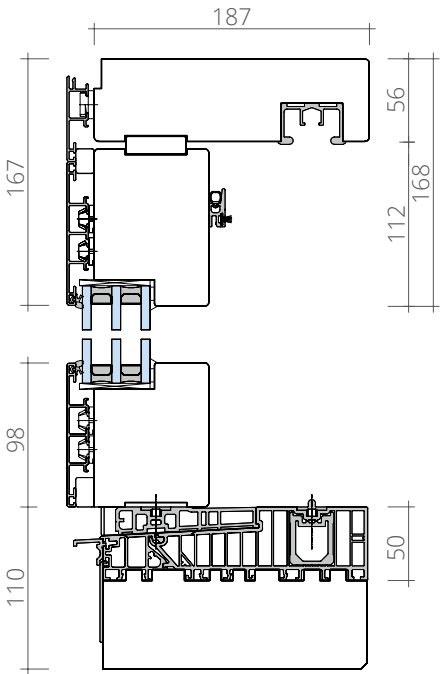


Moving glass walls has become easy! The lift-and-slide structures of the HS family allow the glazing of large and very large openings that are inaccessible to pivot door systems.

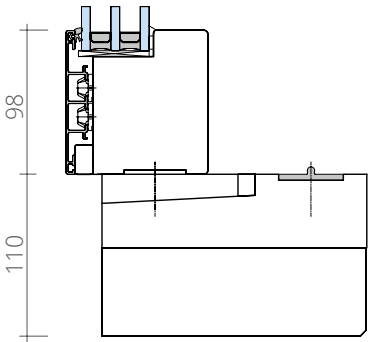
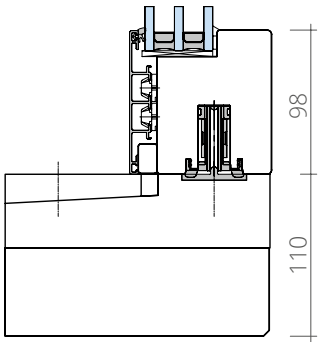
Vertical section (A)



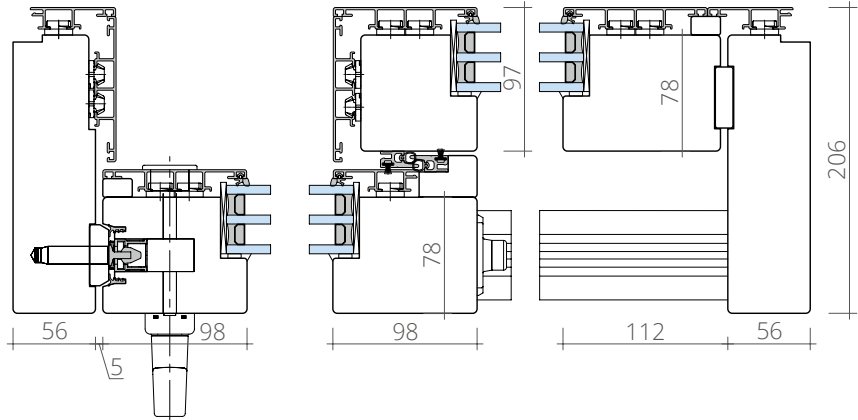
Vertical section (B)



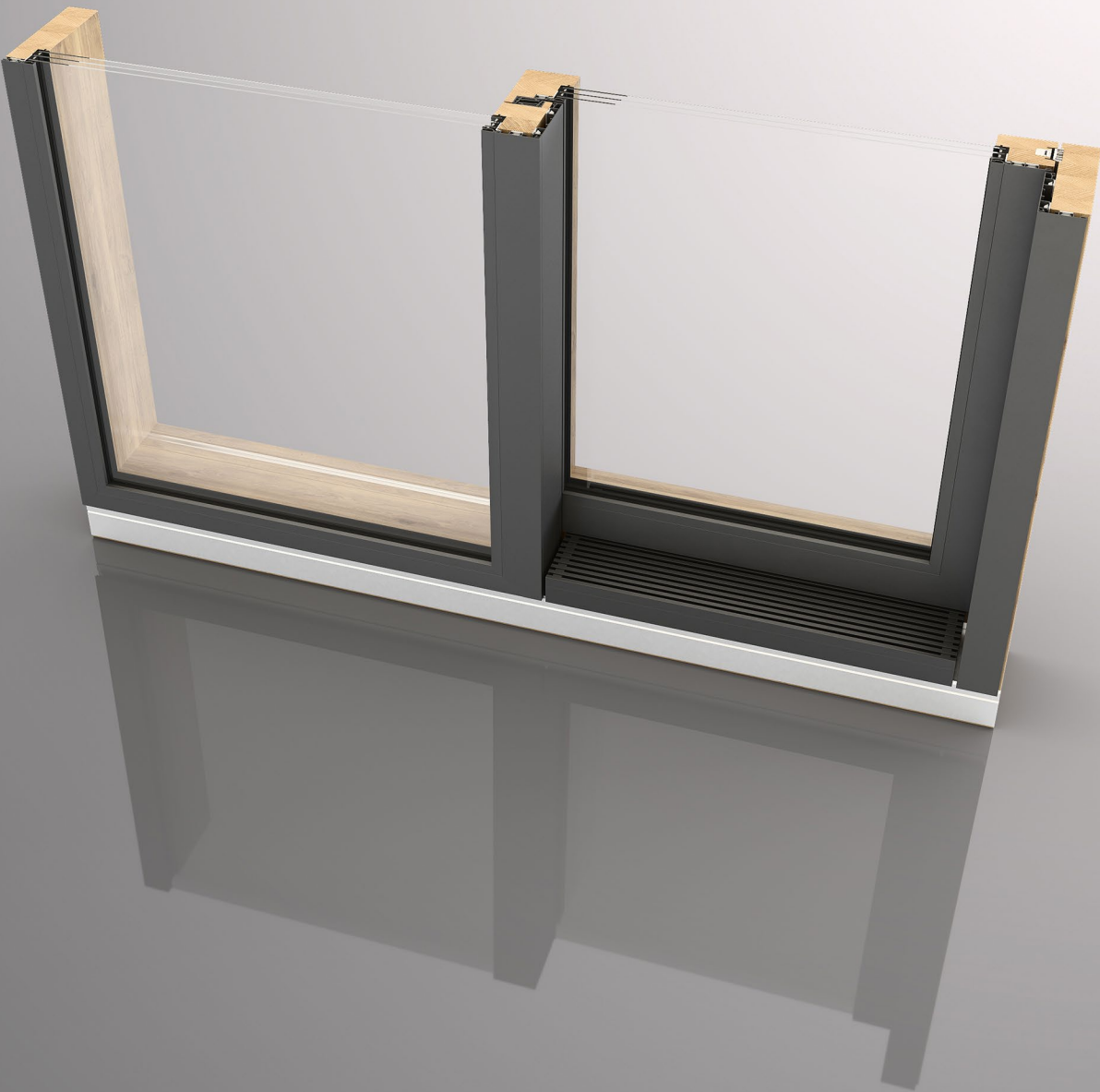
Solid wood threshold



Horizontal section (C)

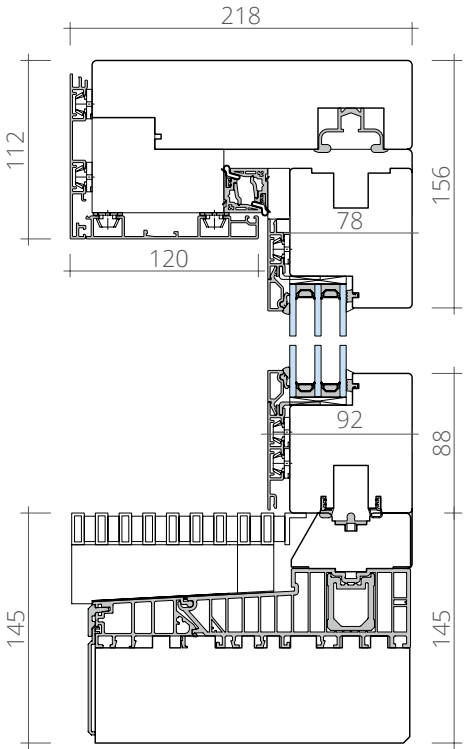


SLIDING SYSTEM HSWAI

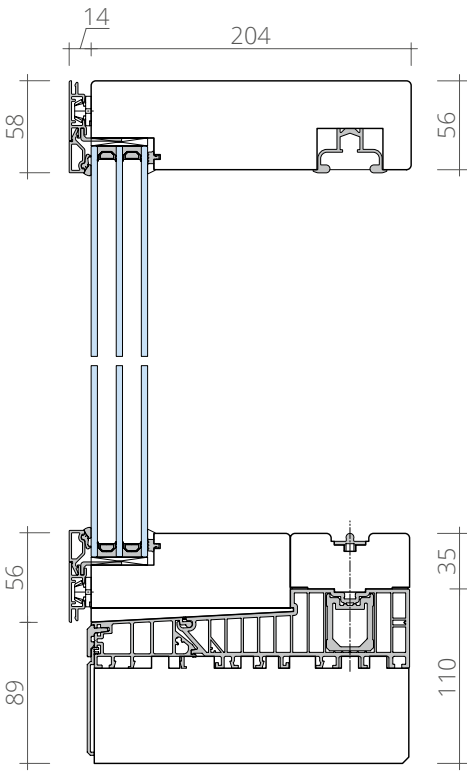


Wood-aluminum system with the finest lines in the blind part of the product.

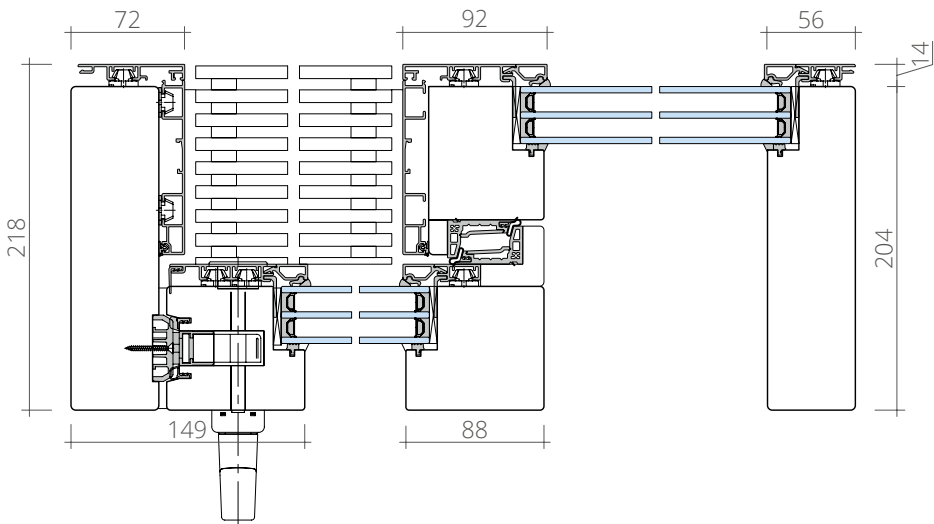
Vertical section (A)



Vertical section (B)

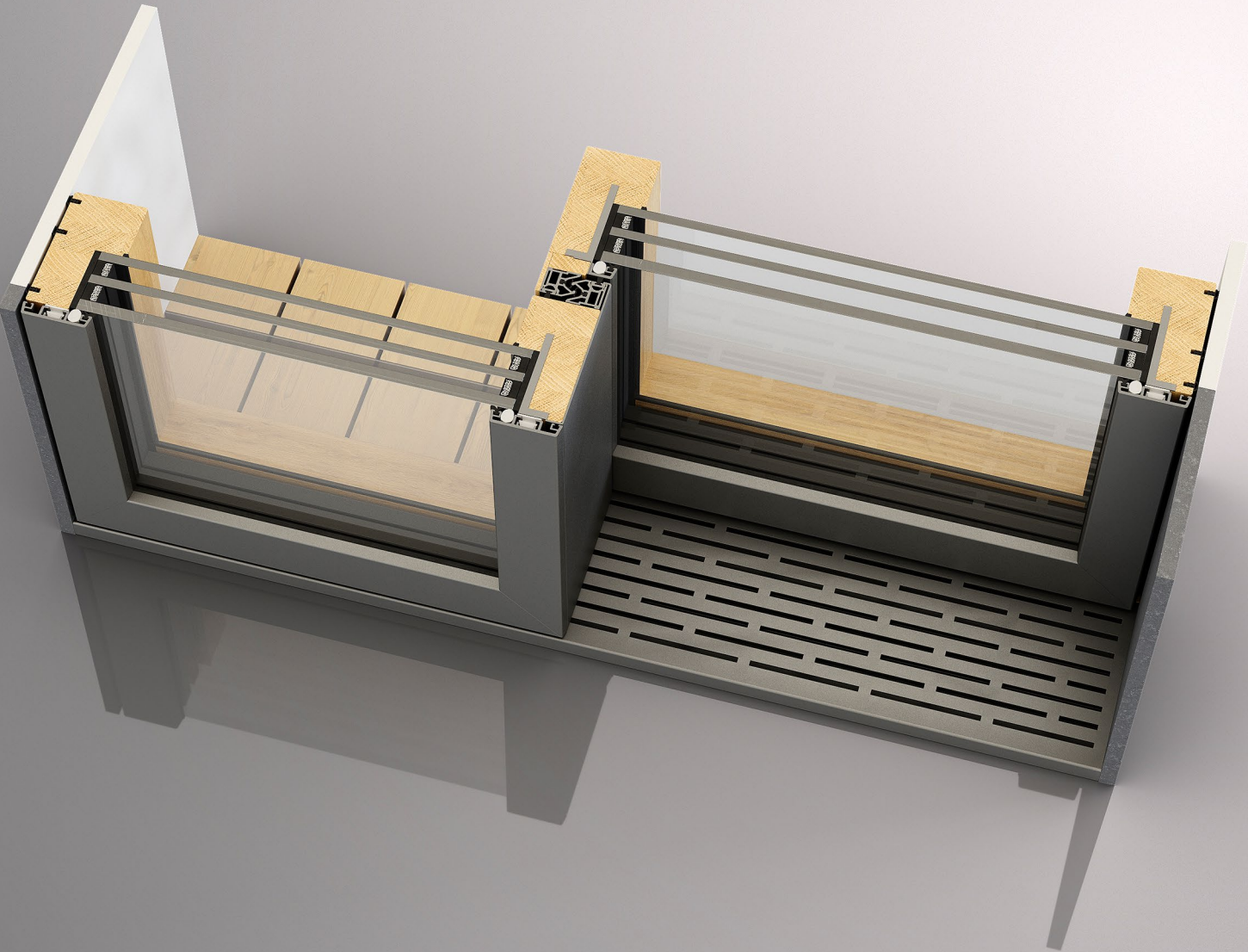


Horizontal section (C)

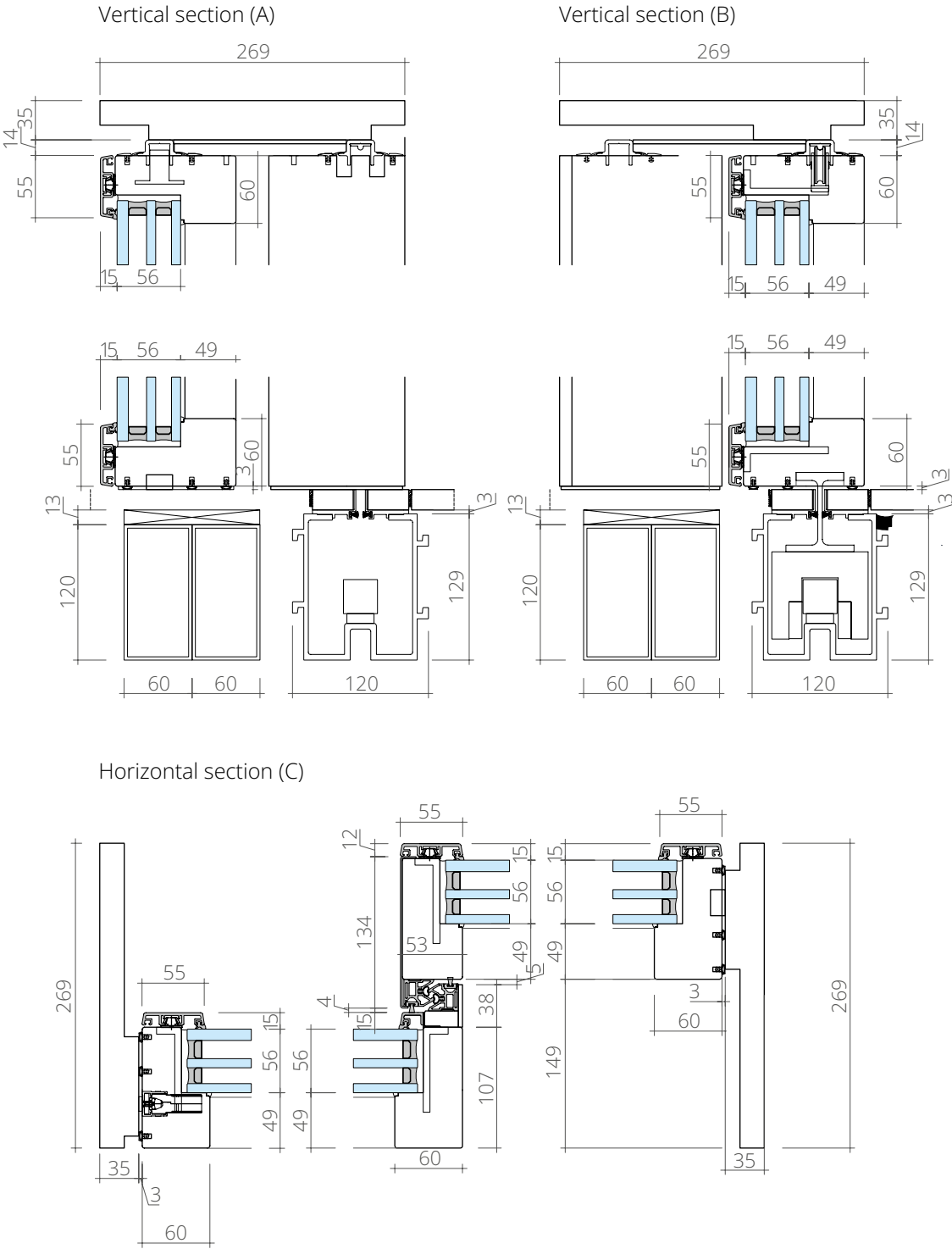


SLIDING SYSTEM

LSWB



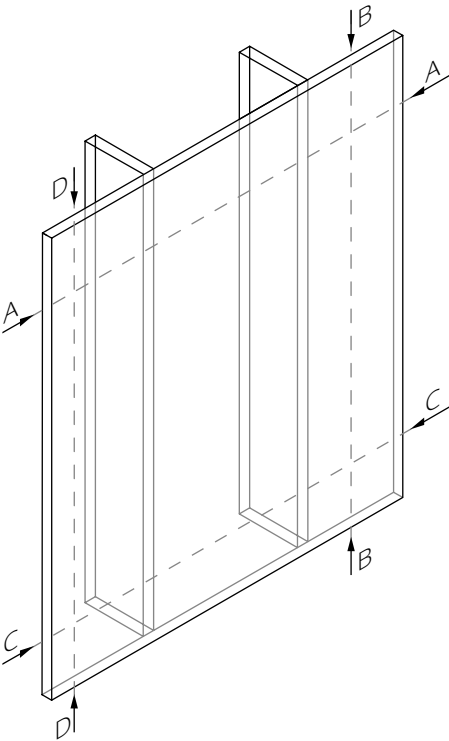
The LSWB series is a logical continuation of the family of sliding translucent structures. A key feature of the system is the ability to make sashes weighing up to one ton. At the same time, thanks to the use of a magnetic levitation carriage instead of a mechanical one, the sashes are easily moved manually and do not require additional automation.



FACADE SYSTEMS

FWA60, FWB80
FWA60 M
FWS60
FWW60
FWA60 GQ

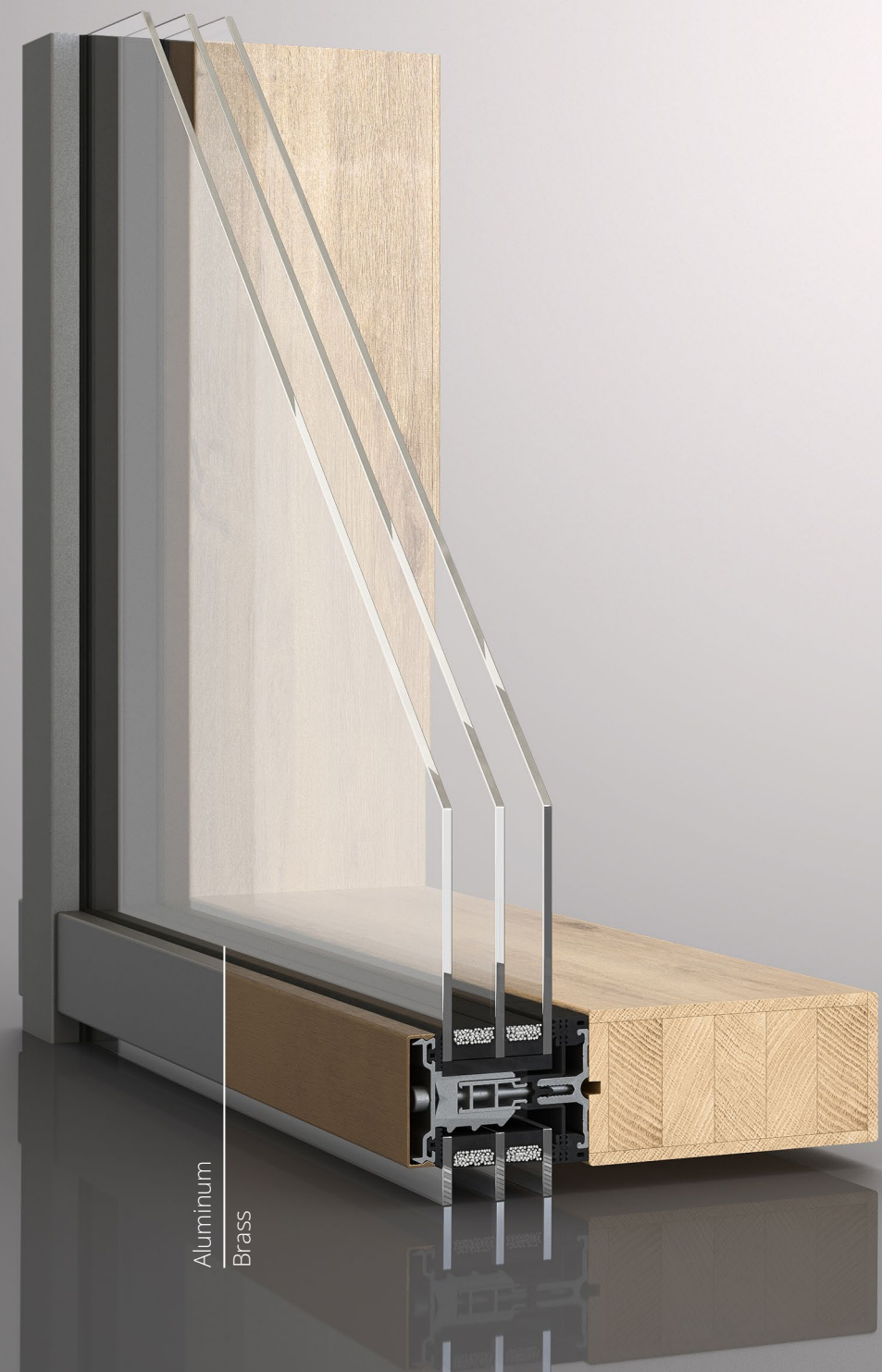
Facade systems help to solve the most ambitious architectural tasks, allowing huge spaces to be glazed with thin structures. They provide a large amount of natural light in the room and smoothly fit into the architecture and interiors of modern buildings, demonstrating the beauty and quality of natural materials.



FACADE SYSTEM

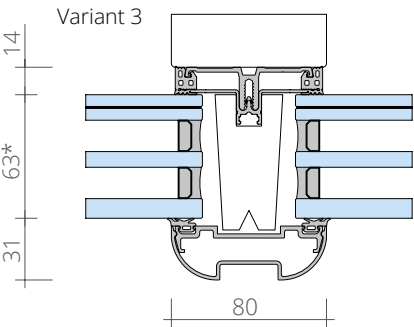
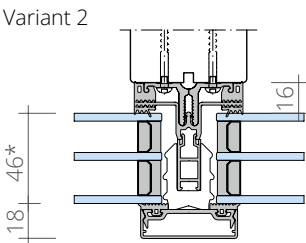
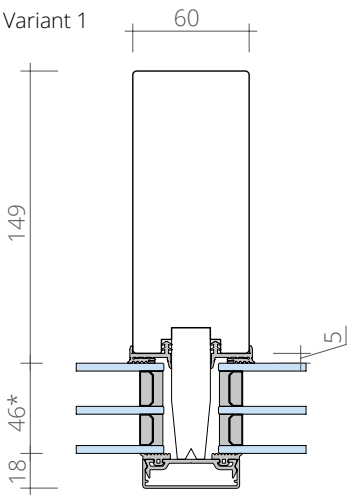
FWA60

FWB80

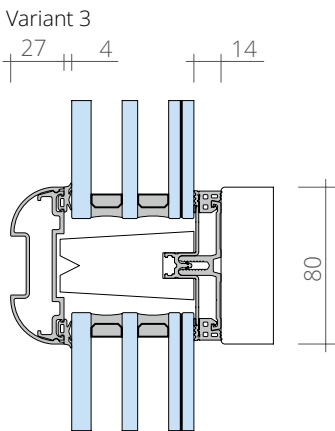
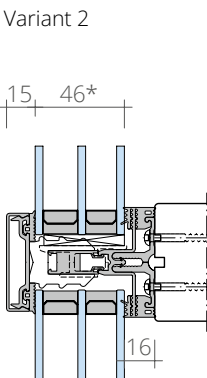
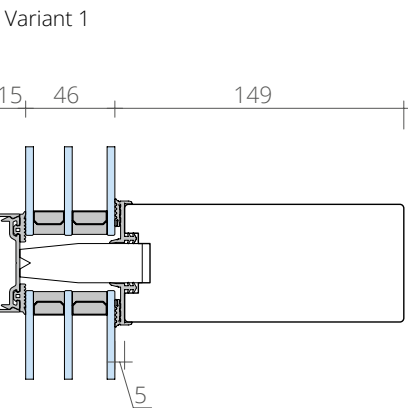


The FWA/FWB systems series is considered a classic one among facade systems. Thanks to a large assortment of outdoor decorative elements, it will help to solve a wide range of architectural tasks.

Vertical section (A)

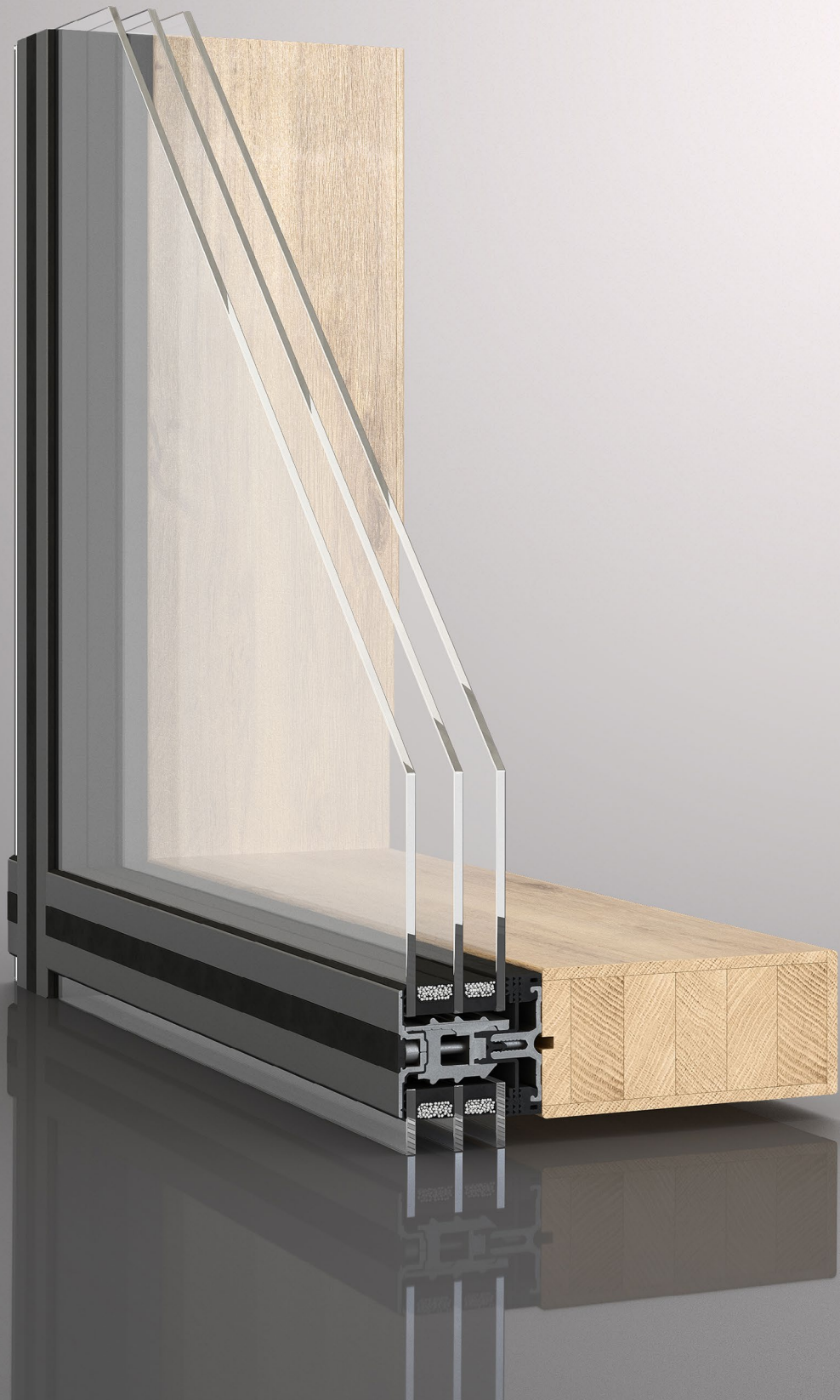


Horizontal section (B)



FACADE SYSTEM

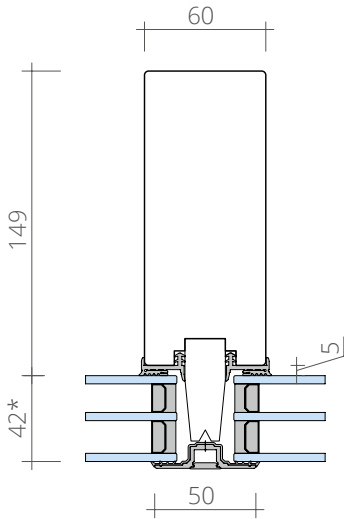
FWA60 M



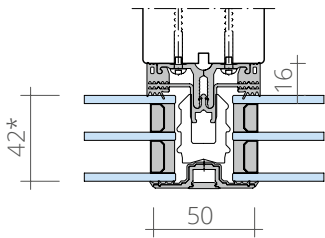
The FWA60 M system has a minimalist decorative bonnet.

Vertical section (A)

Variant 1

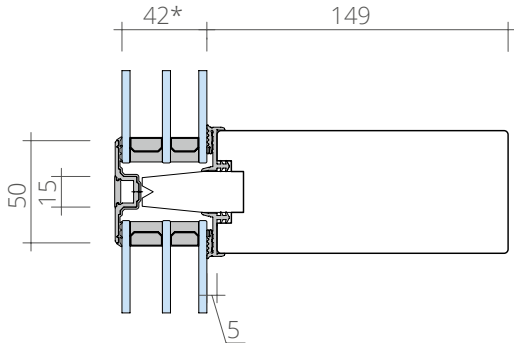


Variant 2

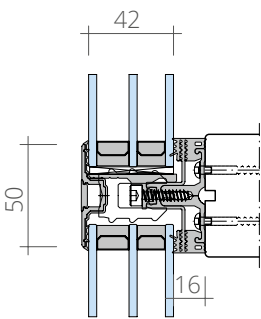


Horizontal section (B)

Variant 1

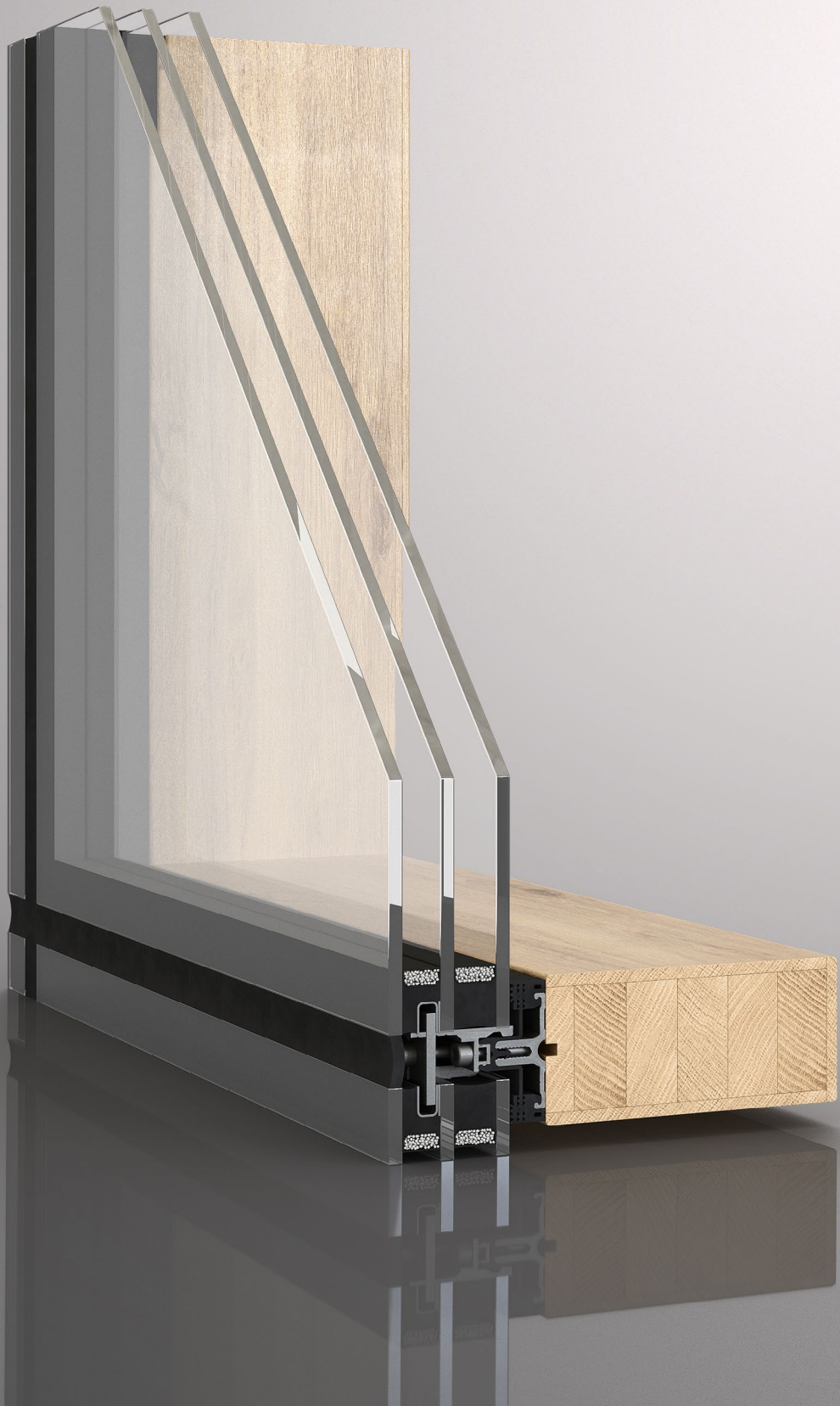


Variant 2



FACADE SYSTEM

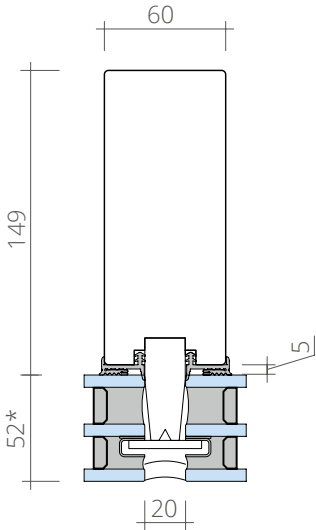
FWS60



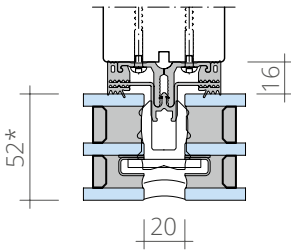
The FWS60 system has no decorative elements. Its minimalistic design and high performance make it indispensable in modern architecture.

Vertical section (A)

Variant 1

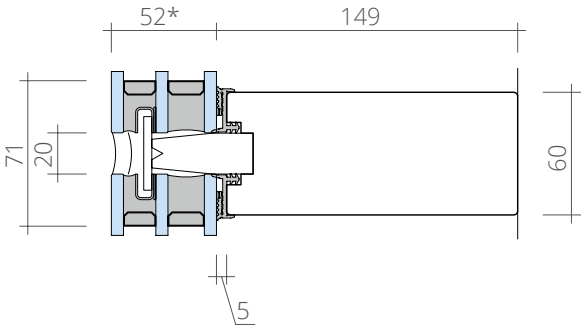


Variant 2

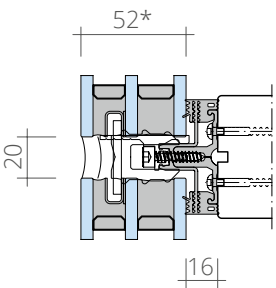


Horizontal section (B)

Variant 1

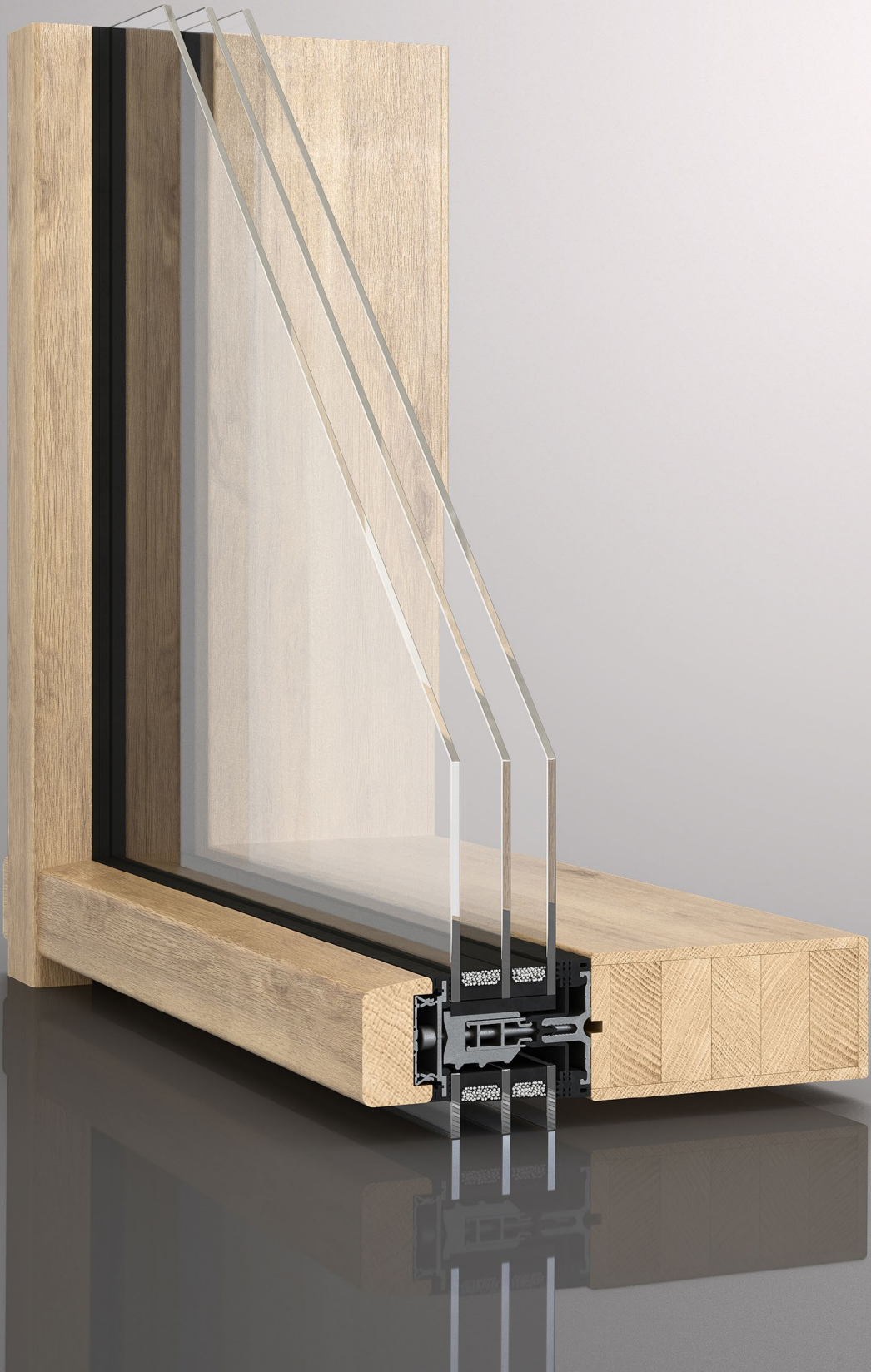


Variant 2



FACADE SYSTEM

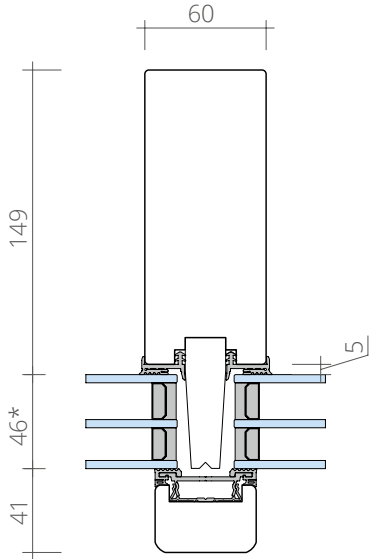
FWW60



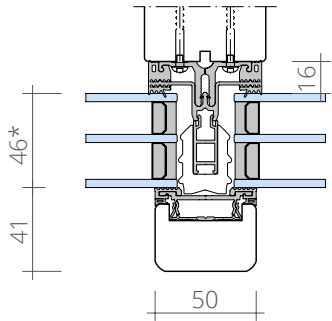
All visible parts of the FWW60 series are made of wood. It was developed specifically for integration of facade solutions in architecture having no place for metal.

Vertical section (A)

Variant 1

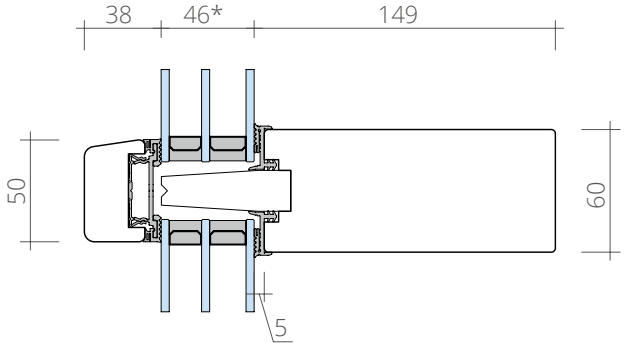


Variant 2

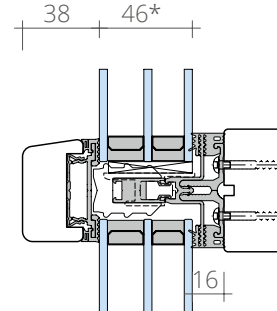


Horizontal section (B)

Variant 1

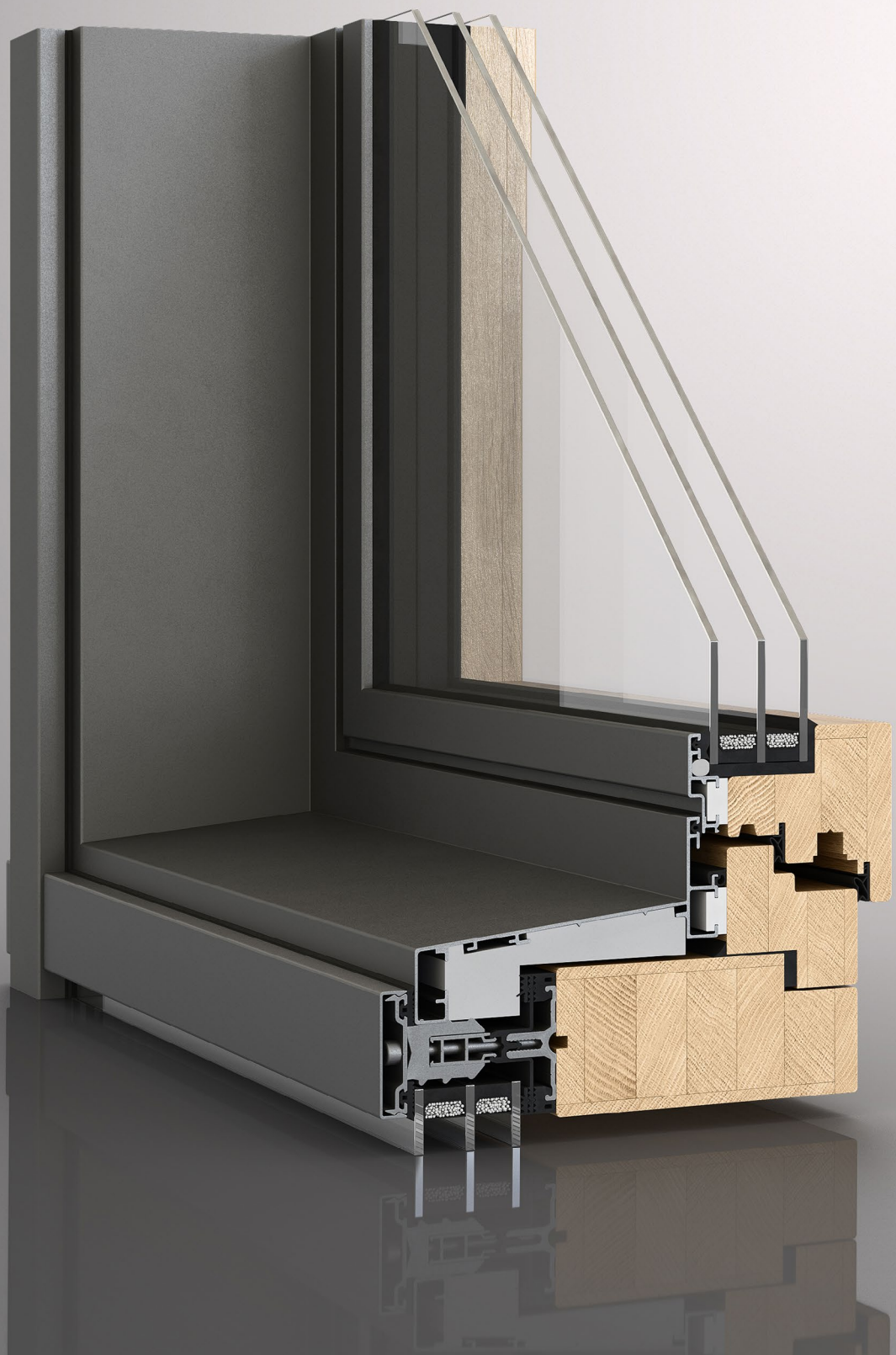


Variant 2



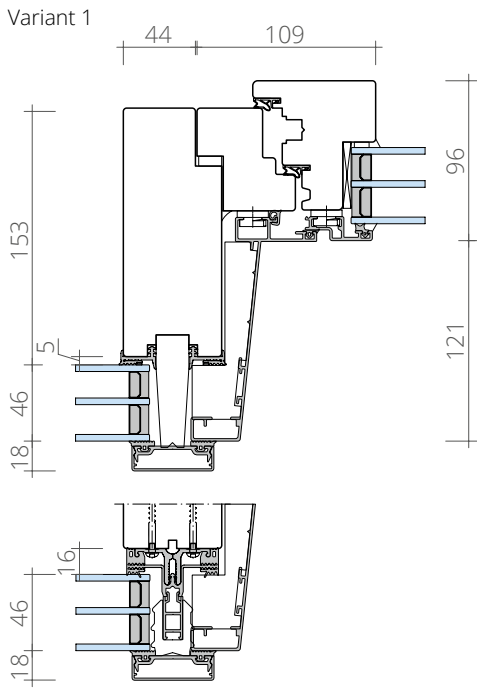
FACADE SYSTEM

FWA60 GQ

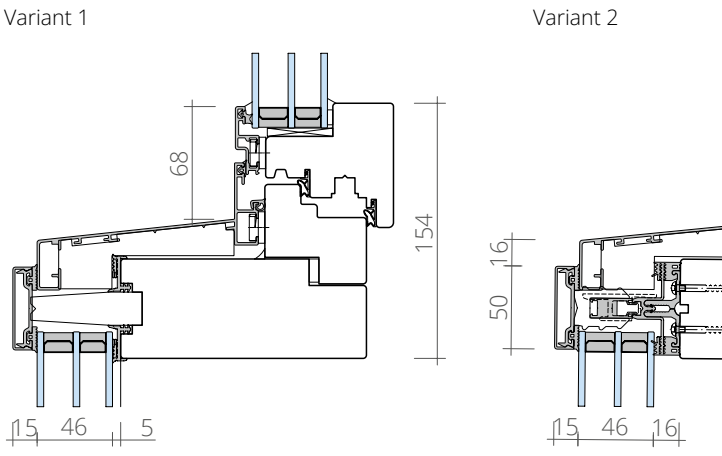


The FWA60 GQ series was designed specifically for the implementation of original architectural solutions. Carrying the windows over the interior room adds additional dynamics to the facade.

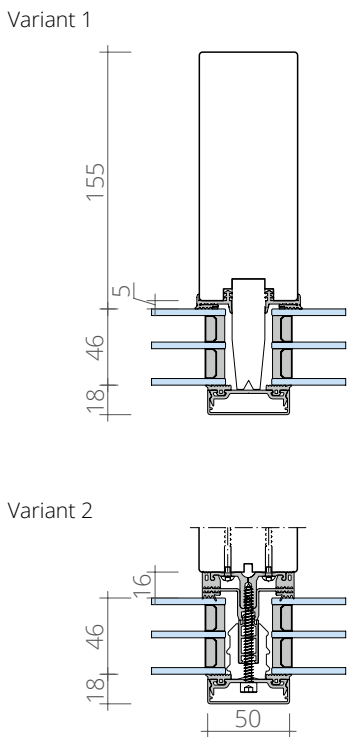
Vertical section (A)



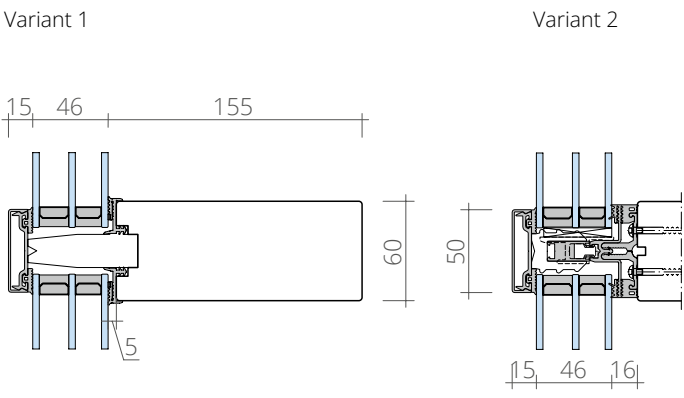
Horizontal section (B)



Vertical section (C)



Horizontal section (D)



MG Windows

© KUKUDESIGN: design and layout, 2021
© Photo: pp. 2, 10, 12, 34–39, 62–63 Daniel Annenkov;
pp. 46–49 Ilya Ivanov; pp. 40–45, 50–61, 68–69 Dmitry Yagovkin

mggroup.su

